

Unilli KX150 Parts List

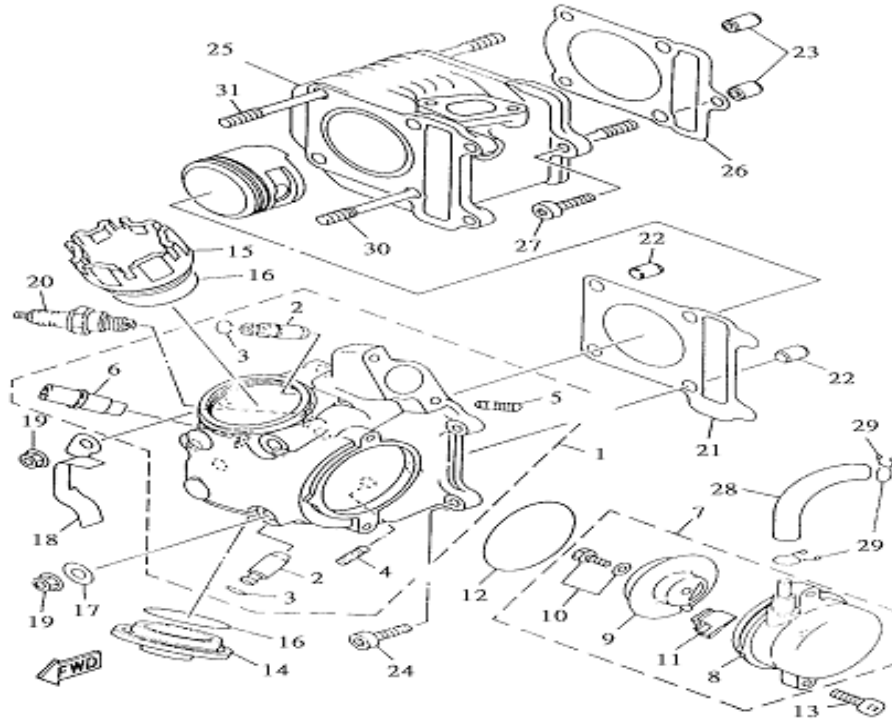


Fig 1. Cylinder				
NO	PART NUMBER	DESCRIPTION	USING	SPECIFICATION
1	AA02-5A150-000	Cylinder Head Assy	1	
2	AA06-5A150-000	Guide, Intake Valve	2	
3	D13-1310	Circlip	2	ψ13×ψ1.0
4	D27-06030	Bolt	2	M6×30L
5	D27-06037	Bolt, Stud	2	M6×37L
6	AA07-5A150-000	Pipe 1	1	
7	AA08-5A150-000	Breather Assy	1	
8	AA09-5A150-000	Breather Cover	1	
9	AA10-5A150-000	Plate, Breather	1	
10	D28-06012	Bolt, W/Washer	1	M6×12L
11	AA11-5A150-000	Seal, Labyrinth	1	
12	D18-06118	O- Ring	1	ψ61.8×ψ1.8
13	D02-06020	Screw, Pan Head(+)	2	M6×20L
14	AA12-5A150-000	Cover, Cylinder Head Side 2	1	
15	AA13-5A150-000	Cover, Cylinder Head Side 3	1	
16	D18-04431	O-Ring	2	ψ44.4×ψ3.1
17	D11-081820	Washer,Plate	2	ψ8×ψ18×2.0
18	AA38-5A150-000	Plate	1	
19	D04-08	Nut,Flg	4	M8
20	AA01-5A150-00A	Plug,Spark (C7E)	1	C7E
21	AA03-5A150-000	Gasket,Cylinder Head 1	1	
22	D15-10014	Pin,Dowel	2	ψ10×14L
23	D15-10014	Pin,Dowel	2	ψ10×14L
24	D03-06025	Bolt.Hex.Socket	2	M6×25L
25	AA04-5A150-000	Cylinder Set	1	
26	AA05-5A150-000	Gasket,Cylinder	1	
27	D03-06025	Bolt.Hex.Socket	1	M6×25L

Unilli KX150 Parts List

28	D17-1014410	Hose	1	ψ10×ψ14×410L
29	D10-1315	Clip	1	ψ13×ψ1.5
30	D27-08204	Bolt,Stud	2	M8×204L
31	D27-08179	Bolt,Stud	2	M8×179L

Unilli KX150 Parts List

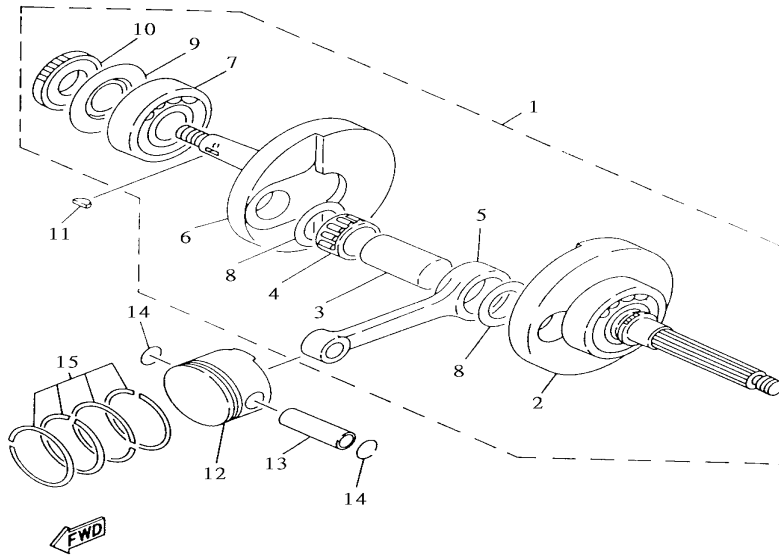


Fig 2. Crankshaft.Piston.Rod

NO	PART NUMBER	DESCRIPTION	USING	SPECIFICATION
1	AB00-5A150-000	Crankshaft Assy	1	
2	AB01-5A150-000	Crank Kit	1	
3	AB04-5A150-000	pin,Crank 1	1	
4	D21-263116	Brg	1	$\psi 26 \times \psi 31 \times 16$
5	AB03-5A150-000	Rod,Cinnecting	1	
6	AB02-5A150-000	Crank 2	1	
7	D21-6205	Brg	1	6205C3
8	D11-264010	Washer	2	$\psi 26 \times \psi 40 \times 1.0$
9	AB09-5A150-000	Spacer	1	
10	AB07-5A150-000	Gear,Pump Drive	1	
11	D07-0317	Key,Woodrive	1	3×17
12	AB06-5A150-000	Piston (STD)	1	
13	AB08-5A150-000	Pin,Pistton	1	
14	D13-14088	Circlip	2	$\psi 14 \times \psi 0.8$
15	AB05-5A150-000	Piston Ring Set (STD)	1	

Unilli KX150 Parts List

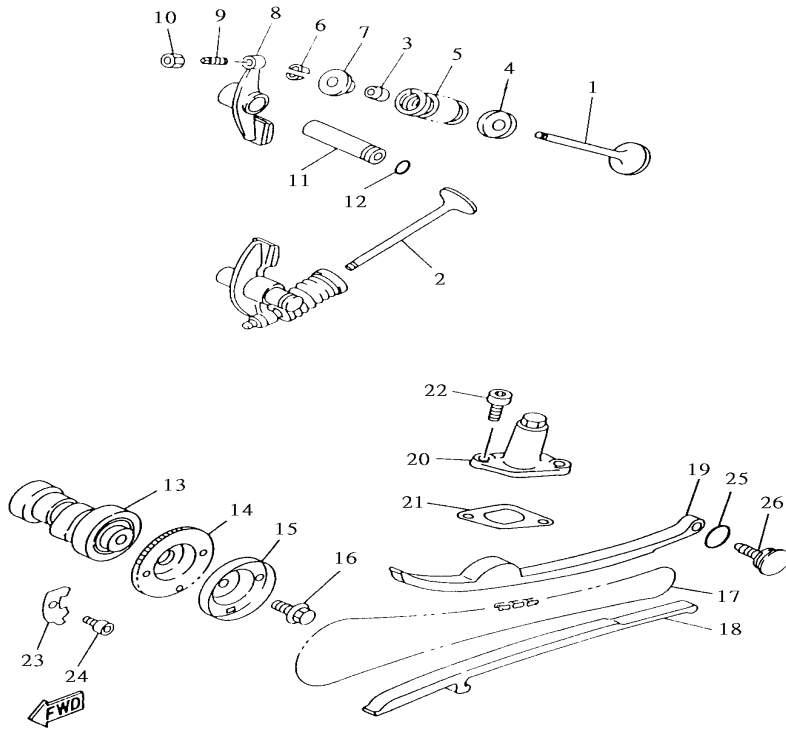


Fig 3. Intake				
NO	PART NUMBER	DESCRIPTION	USING	SPECIFICATION
1	AA15-5A150-000	Valve,Intake	1	
2	AA16-5A150-000	Valve,Exhaust	1	
3	AA17-5A150-000	Seal,Valve Stem	2	
4	AA18-5A150-000	Seal,Valve Spring 2	2	
5	AA35-12113	Spring,Valve Inner	2	
6	AA19-5A150-000	Cotter, Valve	4	
7	AA20-5A150-000	Retainer,Valve Spring	2	
8	AA21-5A150-000	Arm,Valve Rocker	2	
9	D68-05018	Screw,Valve Adjusting	2	M5×18.5
10	D06-05A	Nut	2	M5
11	AA23-5A150-000	Shaft, Rocker 2	2	
12	D18-00619	O-Ring	2	ψ6.8×ψ1.9
13	AA24-5A150-000	Camshaft Assy 1	1	
14	AA26-5A150-000	Sprocket,Cam Chain	1	
15	AA10-5A150-000	Plate,Breather 2	1	
16	D32-08016	Bolt, Flg	1	M8×16L
17	AA37-5A150-000	Chain	1	
18	AA27-5A150-000	Guide,Stopper 1	1	
19	AA28-5A150-000	Guide,Stopper 2	1	
20	AA29-5A150-000	Tensioner Assy,Cam Chain	1	
21	AA31-5A150-000	Gasket,Tensioner Case	1	
22	D03-06016	Bolt.Hex.Socket	2	M6×16L
23	AA42-5A150-000	Plate	1	
24	D03-06012	Bolt.Hex.Socket	1	M6×12L
25	D18-01419	O-Ring	1	ψ14.5×ψ1.9
26	D69-06315	Nut,Lock	1	ψ31.5×M6

Unilli KX150 Parts List

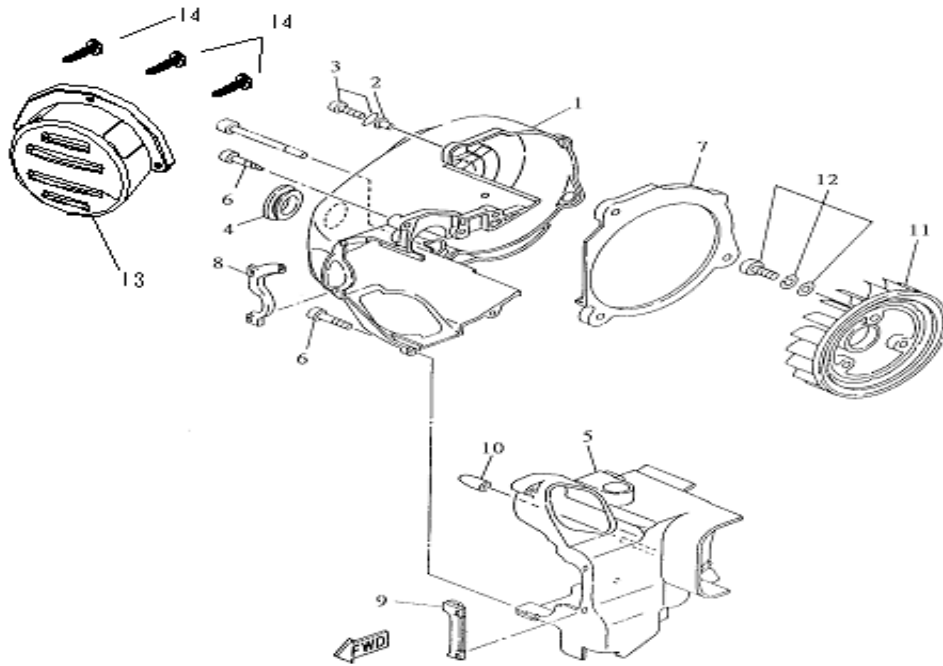


Fig 4. Air Shroud, Fan

NO	PART NUMBER	DESCRIPTION	USING	SPECIFICATION
1	AC03-5A150-000	Air Shroud, Cylinder 1	1	
2	D19-06078	Collar	3	$\psi 6 \times 8L$
3	D43-06020	Screw,w/washer	3	M6 \times 20L
4	AC14-5A150-000	Grommet	1	
5	AC01-5A150-000	Air Shroud, Cylinder 2	1	
6	D70-06030	Screw,Tapping	5	$\psi 6 \times 30L$
7	AC05-5A150-000	Damper, Air Shroud 1	1	
8	AC06-5A150-000	Damper, Air Shroud 2	1	
9	AC07-5A150-000	Damper, Air Shroud 3	1	
10	AC12-5A150-000	Plug,Blind	1	
11	AC02-5A150-000	Fan	1	
12	D72-06016	Screw,w/washer	3	M6 \times 16L
13	AC15-5A150-000	Black Fan Cover	1	
14	G12-04016	Screw,Tapping	3	M4 \times 16L

Unilli KX150 Parts List

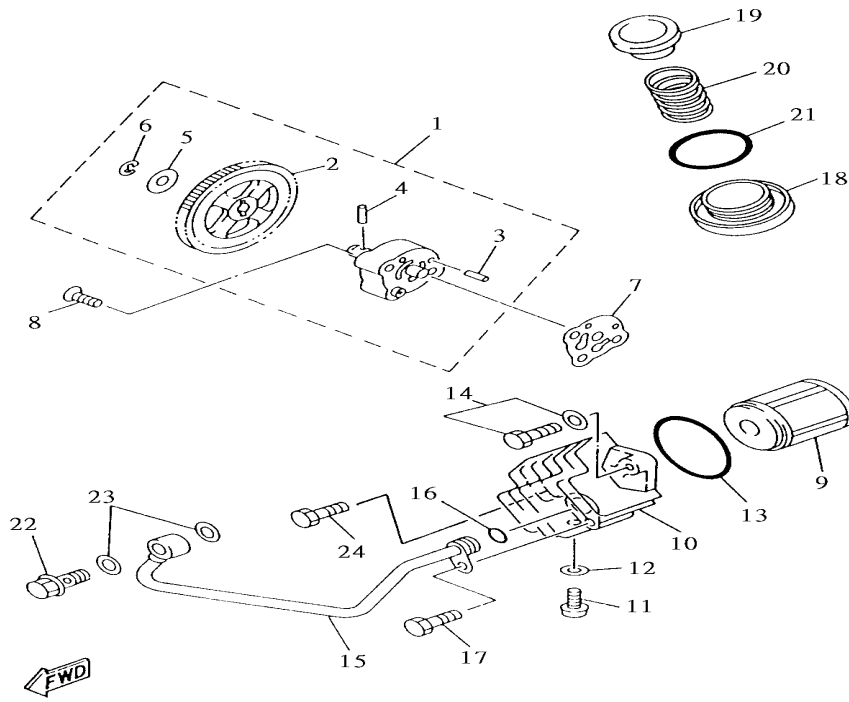


Fig 5. Oil Pump

NO	PART NUMBER	DESCRIPTION	USING	SPECIFICATION
1	AF00-5A150-000	Oil Pump Assy	1	
2	AF01-5A150-000	Gear, Pump Driven	1	
3	D15-03016	Pin, Dowel	1	ψ3.5×16L
4	D15-03017	Pin, Dowel	1	ψ3.5×17L
5	D11-071510	Washer	1	ψ7×ψ15×1.0
6	D01-S07	Clip	1	S07
7	AD02-5A150-000	Gasket	1	
8	D73-06020	Screw, Flat Heat	2	M6×20L
9	AF04-5A150-000	Element Assy, Oil Cleaner	1	
10	AF05-5A150-000	Cover, Oil Element	1	
11	D71-06010	Olt, HeBx	1	M6×10L
12	D30-061310	Gasket	1	ψ6.3×ψ13×1.0
13	D18-04335	O-Ring	1	ψ43.7×ψ3.5
14	D28-06020	Bolt, W/Washer	1	M6×20L
15	AF08-5A150-000	Oil Pipe Comp. 1	1	
16	D18-00819	O-Ring	1	ψ8×ψ1.9
17	D03-06012	Olt, HeBx. Socket	1	M6×12L
18	AF06-5A150-000	Plug, Drain	1	
19	AF07-5A150-000	Strainer, Oil	1	
20	D49-16829	Spring, Compression	1	
21	D18-03435	O-Ring	1	ψ34.7×ψ3.5
22	D59-08025	Bolt, Union	1	M8×25L
23	D30-081516	Washer, Plate	2	ψ8.2×ψ15×1.6
24	D74-06393	Bolt	1	M6

Unilli KX150 Parts List

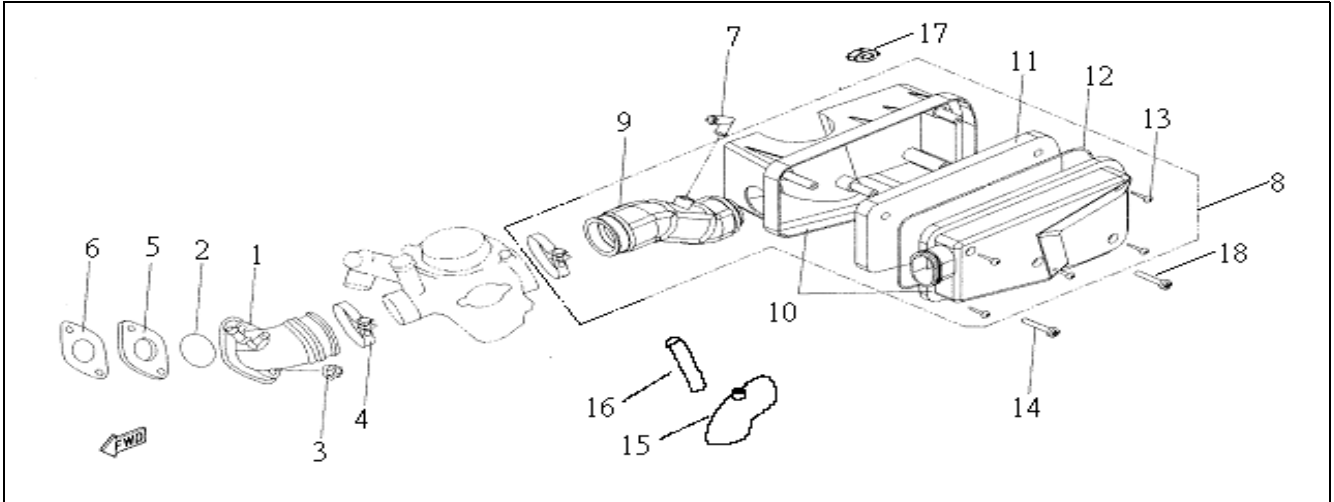


Fig 6. Air Cleaner				
NO	PART NUMBER	DESCRIPTION	USING	SPECIFICATION
1	AH01-5A150-000	Manifold	1	
2	D18-03020	O-Ring	1	$\psi 30.2 \times \psi 2$
3	D04-06	Nut, Flg	2	M6
4	D20-4808	Band	2	$\psi 48 \times 8 \text{ 2.8mm}$
5	AH08-5A150-000	Joint	1	
6	AH07-5A150-000	Gasket, Manifold	1	
7	AK10-5A150-000	Joint	1	
8	AG00-5A150-000	Air Cleaner Assy	1	
9	AG00-5A150-000-01	Joint Air Cleaner	1	
10	AG01-5A150-000	Air Cleaner Case Comp	1	
11	AG03-5A150-000	Element, Air Cleaner	1	
12	AG04-5A150-000	Seal	1	
13	K12-0526	Screw, Tapping	5	$\psi 5 \times 26L$
14	D02-06025	Screw, Pan Head	1	M6 $\times 25L$
15	AG11-CX150-000	Air Intake	1	
16	D39-0507470	Limpid Hose	1	$\psi 5 \times \psi 7 \times 470$
17	K33-06	Insert Lock Nut	1	M6
18	D02-06030	Screw, Pan Head	1	M6 $\times 30$

Unilli KX150 Parts List

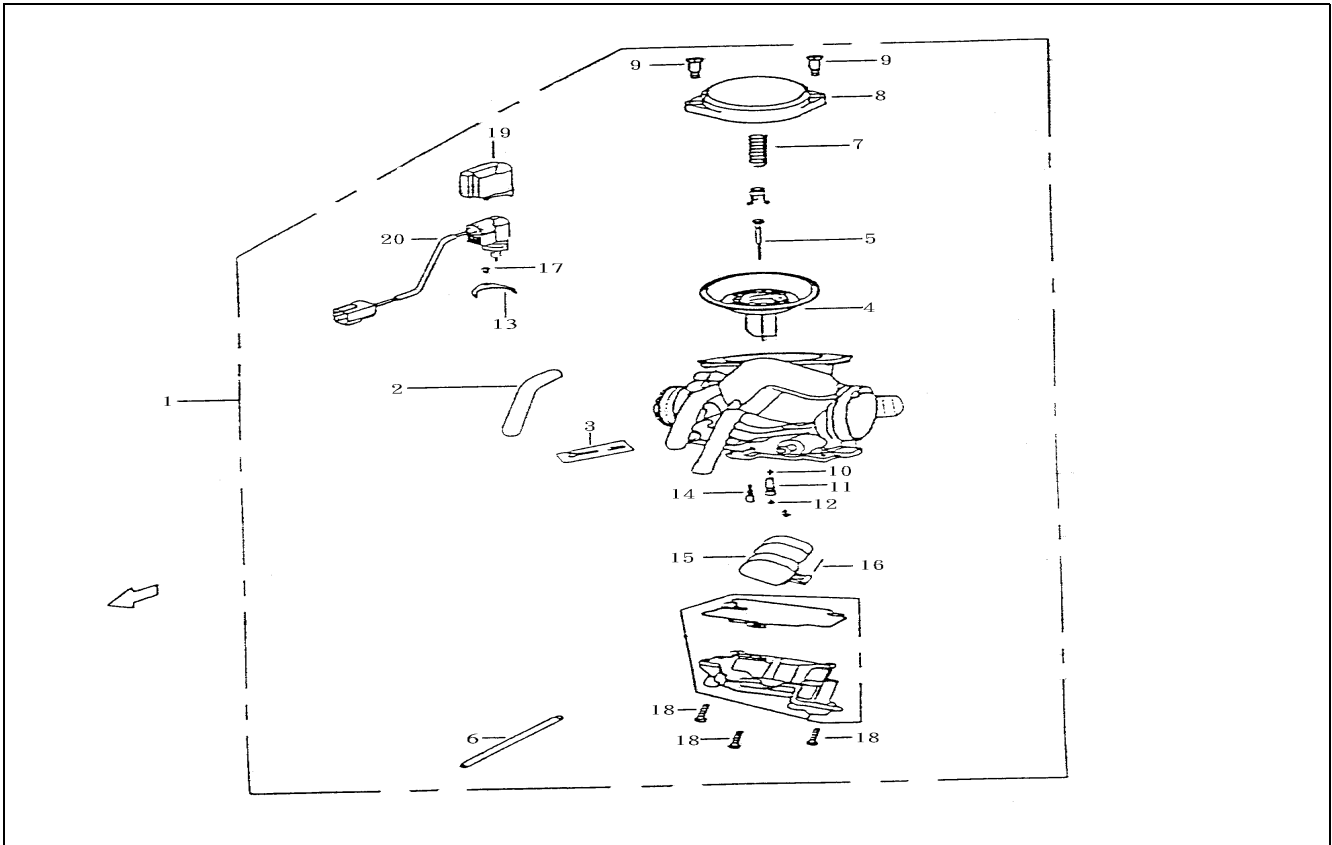


Fig 7. Carburetor				
NO	PART NUMBER	DESCRIPTION	USING	SPECIFICATION
1	AI00-5A150-00A	Garburetor Assy 1	1	4HLLJ
2	AI00-5A150-02	Tube Set	1	
3	AI00-5A150-03	Screw Set	1	
4	AI00-5A150-04	Vacuum Piston Comp	1	
5	AI00-5A150-05	Jet Needle Comp	1	
6	AI00-5A150-06	Tube Set	1	
7	AI00-5A150-07	Spg;Compr	1	
8	AI00-5A150-08	Top Set	1	
9	AI00-5A150-09	Screw, Pan	2	
10	AI00-5A150-10	Needle Jet	1	
11	AI00-5A150-11	Needle Jet Holder	1	
12	AI00-5A150-12	Main Jet	1	
13	AI00-5A150-13	Set Plate	1	
14	AI00-5A150-14	Slow Jet	1	
15	AI00-5A150-15	Float Comp	1	
16	AI00-5A150-16	Arm Pin	1	
17	AI00-5A150-17	Screw Washer	1	
18	AI00-5A150-18	Screw, Pan	3	
19	AI00-5A150-19	Holder Cap	1	
20	AI00-5A150-20	Auto Bystarter Set	1	

Unilli KX150 Parts List

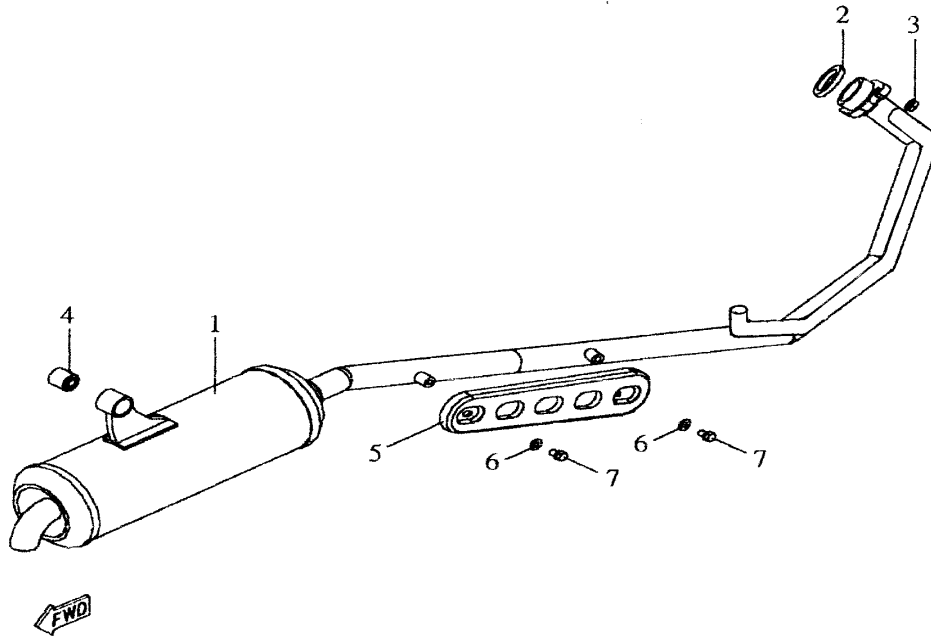


Fig 8. Exhaust Pipe

NO	PART NUMBER	DESCRIPTION	USING	SPECIFICATION
1	AJ00-CX150-00A	Exhaust Pipe Assy	1	
2	AJ01-5A150-000	Gasket,Exhaust Pipe	1	
3	D04-06	Nut	2	M6
4	D25-082020	Bush	1	$\psi 8 \times \psi 20 \times 20L$
5	AJ02-5A150-000	Washer	1	
6	AJ04-5A150-000	Gasket	2	$\psi 6 \times \psi 16 \times 0.6$
7	D71-06010	Olt,HeBx	2	M6×10L

Unilli KX150 Parts List

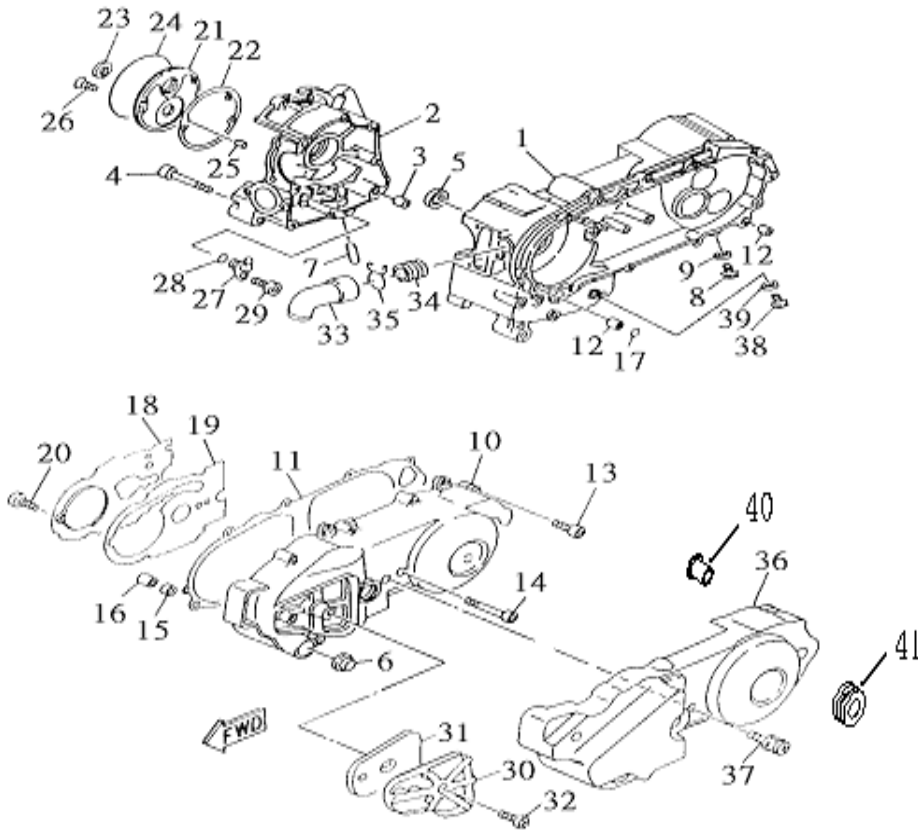


Fig 9. Crankcase

NO	PART NUMBER	DESCRIPTION	USING	SPECIFICATION
1	AK01-5A150-000	Crankcase 1	1	
2	AK02-5A150-000	Crankcase 1	1	
3	D15-12016	Pin,Dowel	2	ψ12×16L
4	D03-06060	Bolp,Hex.Socket	8	M6×60L
5	D16-22327	Seal,Oil	1	ψ22×ψ32×7
6	AK19-5A150-000	Gauge,Level	1	
7	AF09-5A150-000	Pipe,Oil 1	1	
8	D32-08016	Bolt,Flg	2	M8×16L
9	D30-081503	Gasket	2	ψ8×ψ15×3
10	AK04-5A150-000	Cover,Crankcase 1	1	
11	AK07-5A150-000	Gasket,Crankcase Cover 1	2	
12	D15-10014	Pin,Dowel	2	ψ10×14L
13	D03-06035	Bolt,Hex.Socket	9	M6×35L
14	D03-06060	Bolt,Hex.Socket	1	M6×60L
15	FK07-14178	Gasket	1	ψ14×ψ17×8
16	D15-14016	Pin,Dowel	1	ψ14×16L
17	D18-00918	O-Ring	1	ψ9.75×ψ1.8
18	AK20-5A150-000	Plate	1	
19	AK21-5A150-000	Gasket 1	1	
20	G40-06012	Screw,Bind Head	3	M6×12L
21	AK37-5A150-000	Cover,Cap	1	
22	AK05-5A150-000	Gasket,Crankcase Cover	1	
23	D16-19305	Seal,Oil	1	ψ19×ψ30×5
24	D18-10220	O-Ring	1	ψ102×ψ2
25	D15-12831	Pin	1	ψ3.1×12.8L
26	D73-06020	Screw,Flat Heat	3	M6×20L
27	AF10-5A150-000	Pipe,Oil 2	1	
28	D18-00819	O-Ring	1	ψ8×ψ1.9
29	D03-06012	Bolt.Hex.Socket	1	M6×12L

Unilli KX150 Parts List

30	AK13-5A150-000	Duct,Air	1	
31	AK12-5A150-000	Element 1	1	
32	D40-06016	Screw,Bind Head	1	M6×16L
33	AG06-5A150-000	Duct,Air	1	
34	AG05-5A150-000	Joint	1	
35	D10-02915	Clip	1	ψ29
36	AK28-5A150-000	Cover,Crankcase 3	1	
37	D40-06020	Bolt,Special	3	M6×20
38	D32-08016	Bolt,Flg	1	M8×16L
39	D30-081503	Gasket	1	ψ8×ψ15×3
40	D19-06078	Collar	3	
41	D19-081810	Grommet	3	

Unilli KX150 Parts List

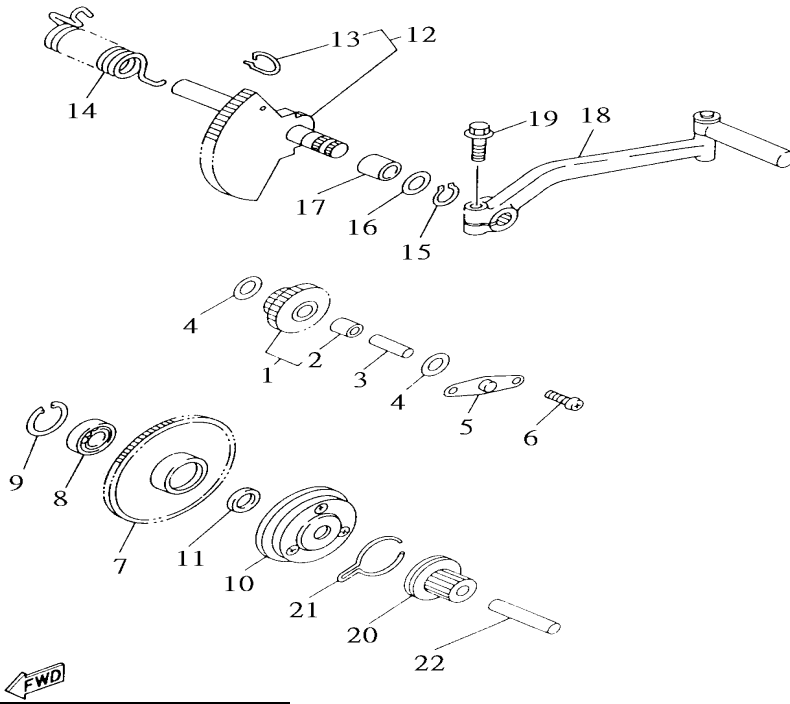


Fig 10. Starter

NO	PART NUMBER	DESCRIPTION	USING	SPECIFICATION
1	AL06-5A150-000	Idle Gear Assy	1	
2	D21-5110	Brg	1	5110
3	AK31-5A150-000	Shaft 1	1	
4	D11-102005	Washer,Plate	2	10.2x ψ 20x0.5
5	AL08-5A150-000	Plate,Idle Gear	1	
6	D02-06012	Screw,Pan Head	2	M6x12L
7	AL03-5A150-000	Wheel,Starter	1	
8	K21-6003VV	Brg	1	6003VV
9	D09-R35	Circlip	1	R35
10	AL04-5A150-000	Starter Clutch Assy	1	
11	D11-162835	Washer,Plate	1	ψ 16x ψ 28x3.5
12	AL01-5A150-000	Kick Shaft Assy	1	
13	D10-5687	Circlip	1	
14	D67-40838	Spring,Torsion	1	
15	D08-S17	Circlip	1	S17
16	D11-172705	Washer,Plate	1	ψ 17x ψ 27x0.5
17	D22-172117	Bush,Solid	1	ψ 17x ψ 21x17L
18	AL02-5A150-000	Kick Shaft Assy	1	
19	K05-06025	Bolt	1	M6x25L
20	AL05-5A150-000	Kick Shaft Assy	1	
21	D10-5673	Clip	1	
22	AK08-5A150-000	Shaft	1	

Unilli KX150 Parts List

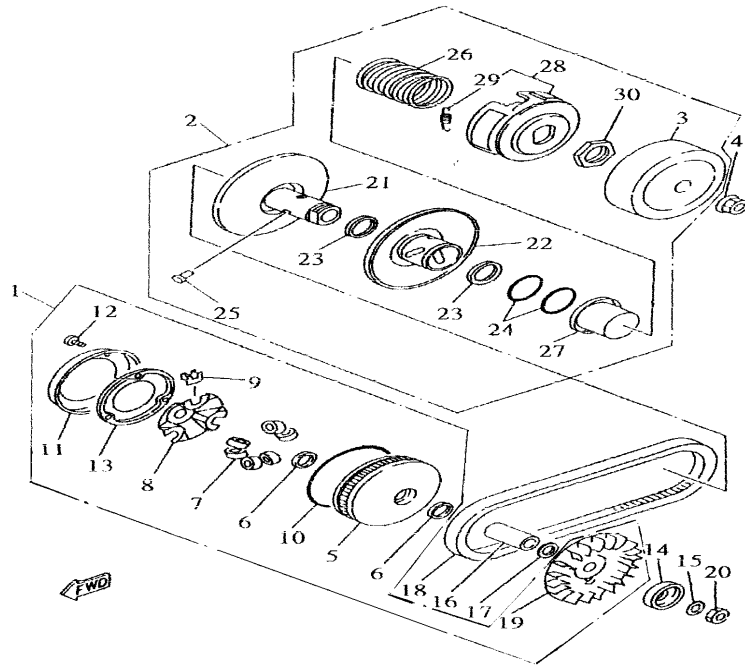


Fig 11. Clutch				
NO	PART NUMBER	DESCRIPTION	USING	SPECIFICATION
1	AM00-5A150-000	Primary Sliding Ass'y	1	
2	AN00-5A150-000	Pulley Ass'y, Driven.	1	
3	AP01-5A150-000	Clutch Housing Comp.	1	
4	D04-14	Nut	1	M14
5	AM01-5A150-000	Primary Sliding Sheave Comp.	1	
6	D16-21284	Seal, Oil	2	$\psi 21 \times \psi 28 \times 4$
7	AM06-5A150-000	Weight	6	
8	AM03-5A150-000	Cam	1	
9	AM04-5A150-000	Slider	3	
10	D18-09618	O-Ring	1	$\psi 96.8 \times \psi 1.8$
11	AM07-5A150-000	Stopper	1	
12	D40-04012	Screw, Bind Head	3	M4 \times 12L
13	AM08-5A150-000	Primary Sheave Cap Comp.	1	
14	AP02-5A150-000	Clutch, Oneway	1	
15	D26-122435	Washer, Conical Spring	1	12.2 \times $\psi 24 \times 3.5$
16	D22-162148	Collar	1	16 \times $\psi 21 \times 48.5L$
17	D11-162109	Washer, Plate	1	$\psi 16 \times \psi 21 \times 0.9$
18	AP03-5A150-000	V-Belt	1	
19	AM02-5A150-000	Sheave, Primary Fixed	1	
20	D06-122270	Nut	1	M12 \times 7.0L
21	AN02-5A150-000	Secondary Fixed Sheave Comp.	1	
22	AN03-5A150-000	Secondary Sliding Sheave	1	
23	D16-22315	Seal, Oil	2	$\psi 22 \times \psi 31 \times 5$
24	D18-04220	O-Ring	2	$\psi 42 \times \psi 2.0$
25	AN04-5A150-000	Pin, Guide	3	
26	AN08-5A150-000	Spring, Compression	1	
27	AN05-5A150-000	Seat, Secondary Spring	1	
28	AN01-5A150-000	Clutch Caprier Assy	1	
29	AN07-5A150-000	Spring, Clutch Weight 1	3	
30	AN06-5A150-000	Nut	1	

Unilli KX150 Parts List

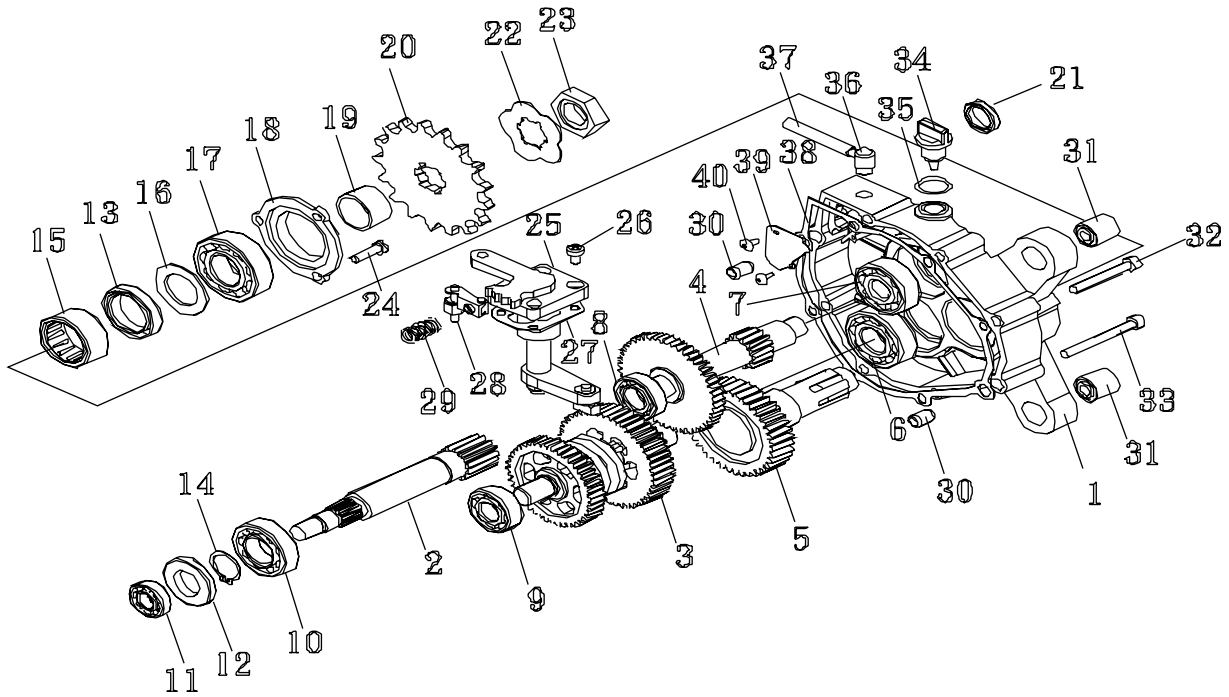


Fig 12. Transmission

NO	PART NUMBER	DESCRIPTION	USING	SPECIFICATION
1	AK03-5A150-000	Speed Change Case cover	1	
2	AQ01-5A150-000	Primary Gear, Drive	1	
3	AQ05-5A150-000	Speed Change Gear Ass'y	1	
4	AQ02-5A150-000	Main Axly Ass'y	1	
5	AQ03-5A150-000	Drive Axly Ass'y	1	
6	D21-6204	Bearing	1	6204
7	D21-6302	Bearing	1	6302
8	D21-6003	Bearing	1	6003
9	D21-6202	Bearing	1	6202
10	D21-60/22	Bearing	1	60/22
11	D21-6001ZZ	Bearing	1	6001ZZ
12	D16-22396	Oil Seal	1	ψ22xψ39x6
13	D16-30428	Oil Seal	1	ψ30xψ42x8
14	D08-S22	Circlip	1	S22
15	D21-RNA4905	Bearing	1	RNA4905
16	FY20-5A150-000	Washer,Plate	1	
17	D21-6205Z	Bearing	1	6205Z
18	AS21-5A150-000	Drive Axly Cover	1	
19	FY21-5A150-000	Collar	1	
20	AQ04-CX150-000	Sprocket,Drive	1	17T
	AQ04-CX150-00A	Sprocket,Drive	1	16T
21	AK19-5A150-00A	Window/Rorthole	1	
22	FY22-5A150-000	Gasket ,Lock	1	
23	FY19-5A150-000	Nut,Lock	1	
24	D02-06020	Screw,Pan Head	3	M6x20L
25	AS00-5A150-000	Fork Rod Axly Ass'y	1	
26	D02-05012	Screw,Pan Head	4	M5x12L
27	AS22-5A150-000	Fork Rod Base Gasket	3	
28	AS04-5A150-000	Speed Fixed Button Ass'y	1	
29	D49-101020	Compress Spring	1	ψ1.0xψ10x20L
30	D15-10014	Pin,Dowel	2	ψ10x14L
31	D25-081928	Bush	2	8.1x28.1x17/19

Unilli KX150 Parts List

32	D03-06045	Bolt,Hex.Socket	6	M6x45L
33	K03-06050	Bolt,Hex.Socket	2	M6x50L
34	AK09-2A050-000	Plug,Oil	1	M14x1.5x15L
35	D18-13825	O-Ring	1	ψ13.8xψ2.5
36	AK10-2A050-000	Breather	1	
37	D39-0507470	Limpid Hose	1	ψ5xψ7x470L
38	AK06-5A150-000	Speed Change Case Gasket	1	
39	AK38-5A150-000	Maze Cover	1	
40	K12-0510	Screw,Tapping	2	ψ5x10L

Unilli KX150 Parts List

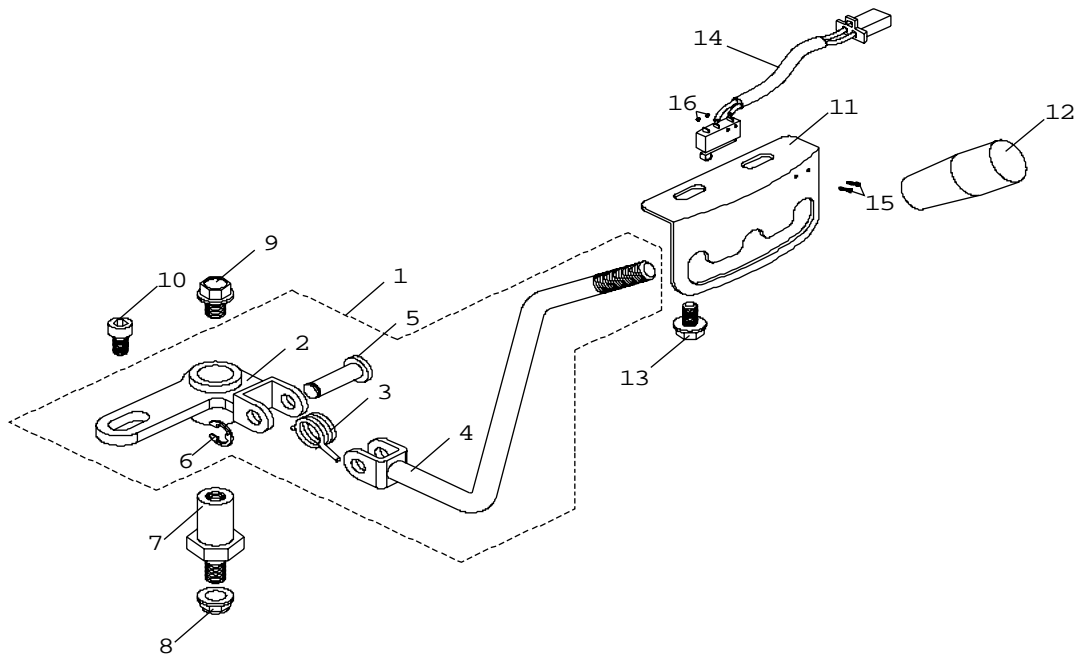
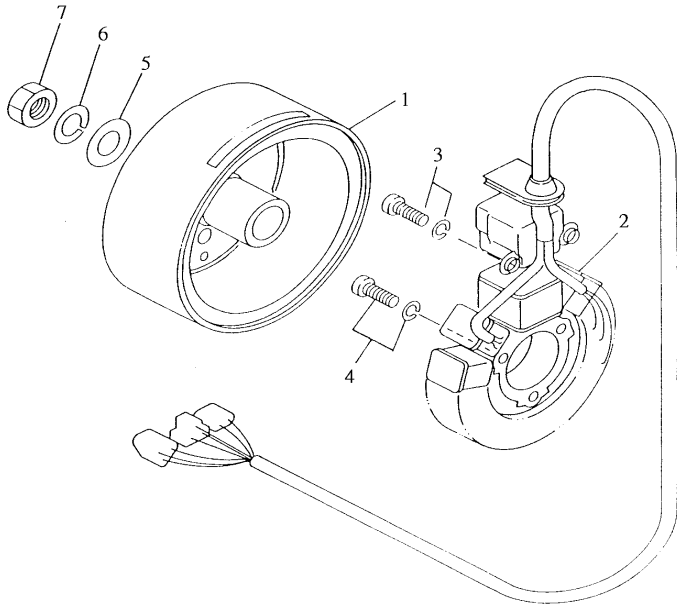


Fig 13. Change Speed System				
NO	PART NUMBER	DESCRIPTION	USING	SPECIFICATION
1	AS05-5A150-000	Gear Shift Ass'y	1	
2	AS06-5A150-000	lever Gear Fixed Axle	1	
3	AS08-5A150-000	Spring	1	
4	AS11-5A150-000	Gear Shift	1	
5	AS16-EX050-000	Roter Axle	1	
6	D07-S07	E-Circlip	1	
7	AS20-5A150-000	Mandrel	1	
8	D04-08	Nut, Lock	1	M8
9	K32-08012	Bolt, Flg	1	M8x12L
10	D03-06012	Bolt, Hex. Socket	1	M6x12L
11	AS10-EX050-001	E Type Plate	1	
12	AS07-EX050-000	Gear Shift Ball	1	
13	K32-06012	Bolt, Flg	2	M6x12L
14	AX18-EX050-000	Limit Switch	1	
15	D02-02010	Screw, Pan Head	2	M2x10
16	D06-02	Nut	2	M2

Unilli KX150 Parts List



FWD

Fig 14. Generator				
NO	PART NUMBER	DESCRIPTION	USING	SPECIFICATION
1	AR00-5A150-000	Base Ass'y	1	AR03/AR01
	AR03-5A150-000	Rotor Assy	1	
	AR01-5A150-000	Stator Assy	1	
2	D72-06016	Screw,W/washer	2	M6x16L
3	D72-06035	Screw,W/washer	3	M6x35L
4	D11-132003	Washer,Plate	1	ψ13xψ20x3
5	D24-122003	Washer,Plate	1	ψ12xψ20x3
6	D06-1219100	Net	1	M12

Unilli KX150 Parts List

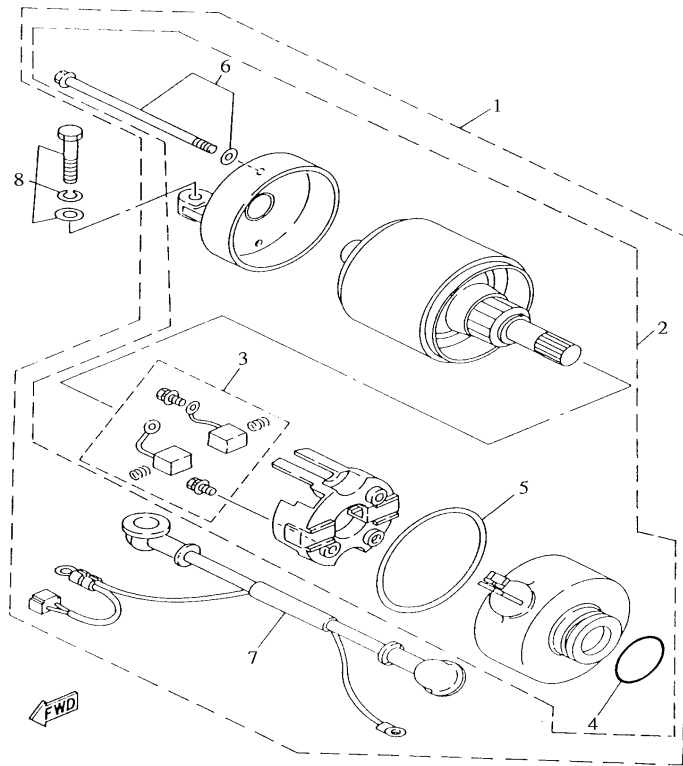


Fig 15. Starting Motor

NO	PART NUMBER	DESCRIPTION	USING	SPECIFICATION
1	AT00-5A150-000	Starting Motor Assy	1	
2	AT03-5A150-000	Starting Motor Set	1	
3	AT01-5A150-000	Brush Set	1	
4	AT00-D18-28025	O-Ring	1	$\psi 28 \times \psi 2.5$
5	AT04-5A150-000	Gasket	1	$\psi 56 \times \psi 60 \times 1$
6	D40-05085	Bolt 2	1	M5x85L
7	AT05-5A150-000	Cord Comp	1	
8	D28-06025	Bolt, W/washer	2	M6x25L

Unilli KX150 Parts List

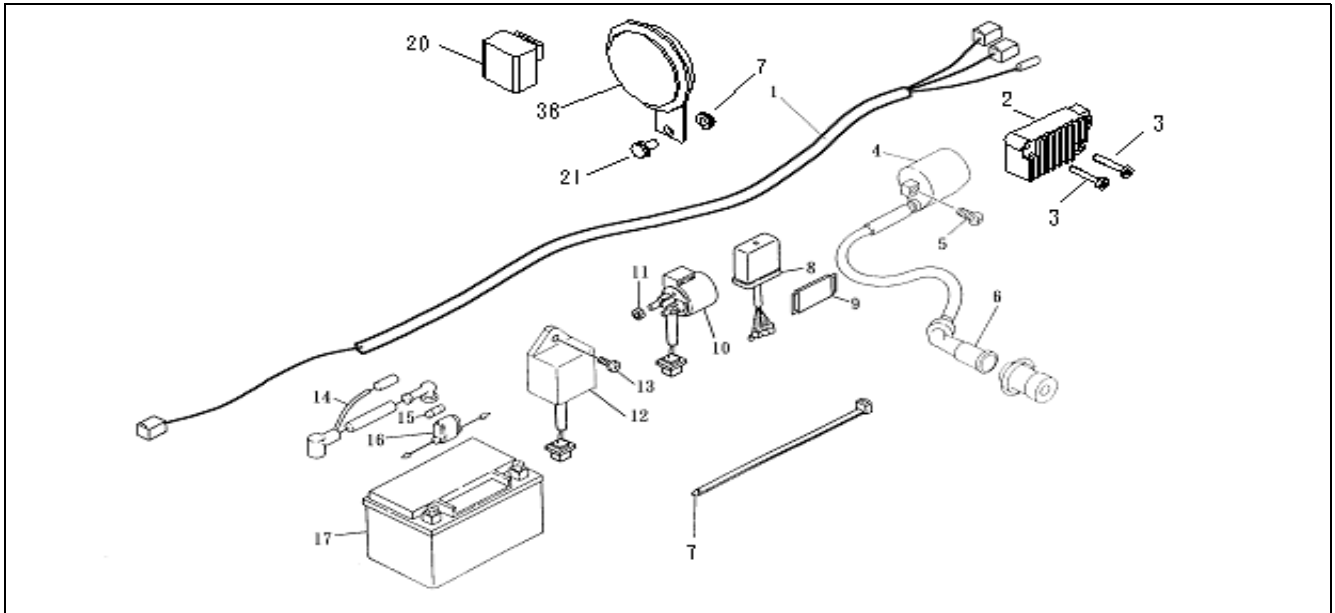


Fig 16. Electrical Parts

NO	PART NUMBER	DESCRIPTION	USING	SPECIFICATION
1	FZ02-CX150-00A	Wire Harness Assy	1	
2	FZ04-5A150-000	Rectifier&Regulator Assy	1	
3	D02-06035	Screw,Pan Head	2	M6x35L
4	FZ05-5A150-000	Ignition Coil Assy	1	
5	G32-06022	Screw,Pan Head	2	M6x22L
6	FZ36-CX150-000	Plup Cap Assy	1	
7	K33-06	Insert Lock Nut	1	M6
8	FZ03-5A150-000	C.D.I. Unit Assy	1	
9	FL05-CX050-00A	Rubber Band	1	
10	FZ06-5A150-000	Starter Relay Assy	1	
11	C04-06	Nut,Hexagon	2	M6
12	FZ21-5A150-000	Control Unit Assy	1	
13	G32-06016	Screw, Pan Head(+)	1	M6x16L
14	FZ15-CX150-000	Wire,Plus Lead	1	
15	FZ17-CX150-000	Fuse	1	7.5A
16	FZ16-CX150-000	Fuse Holder Assy	1	
17	FZ01-CX150-000	Battery Assy	1	7AH
18	D50-20025	Clamp	10	ALT-200M-B
19	FZ08-CX150-000	Horn	1	
20	FZ18-CX050-000	Direction Light Relay	1	
21	K32-06012	Bolt, Hex. Washer Plate	1	M6*12

Unilli KX150 Parts List

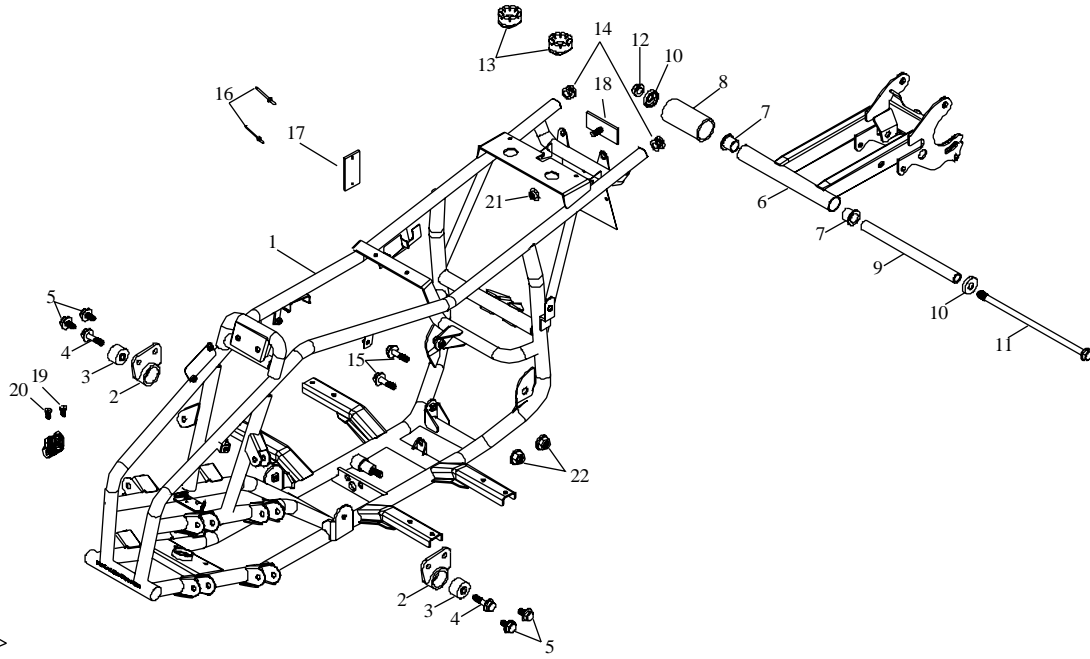


Fig 17. Frame

NO	PART NUMBER	DESCRIPTION	USING	SPECIFICATION
1	FB00-CX150-00A	Frame	1	
2	FC05-CX150-001	Bush	2	
3	D25-10353033	Seat Rear Shock Absorber	2	10*35*30/33
4	K41-10048	Bolt Flange	2	M10*48
5	D32-10020	Bolt Flange	4	M10*20
6	FD00-CX150-00A	Swing Arm Sub Ass'y	1	
7	FF01-CX050-000	Bushing Contain Oil	2	
8	FF03-CX050-000	Rubber Sleeve	1	31.7*38*65
9	D22-1420253	Swing Arm Spacer Tube	1	14.1*20*253
10	FF02-CX050-000	Swing Arm Seal Cover	2	30.8*38.5*7*14
11	C32-14290	Bolt Flange	1	M14*290
12	C33-14	Insert Lock Nut	1	M14
13	FC06-CX050-000	Seat Rear Shock Absorber	2	13*37*23
14	FB00-FK090-052	Tube- Stuff	2	1"
15	K32-08038	Bolt Flange	2	M8*38
16	D14-03	Rivet	2	
17	FC08-CX150-000	Plate, Aluminum	1	
18	AL14-AX050-000	Reflector, Rear	1	
19	C54-05012	Crosshead Screw	1	M5x12
20	R01-05014	Non-Cap Screw	1	M5x14
21	C04-06	Nut, Flange	1	M6
22	D33-08	Insert Lock Nut	2	M8

Unilli KX150 Parts List

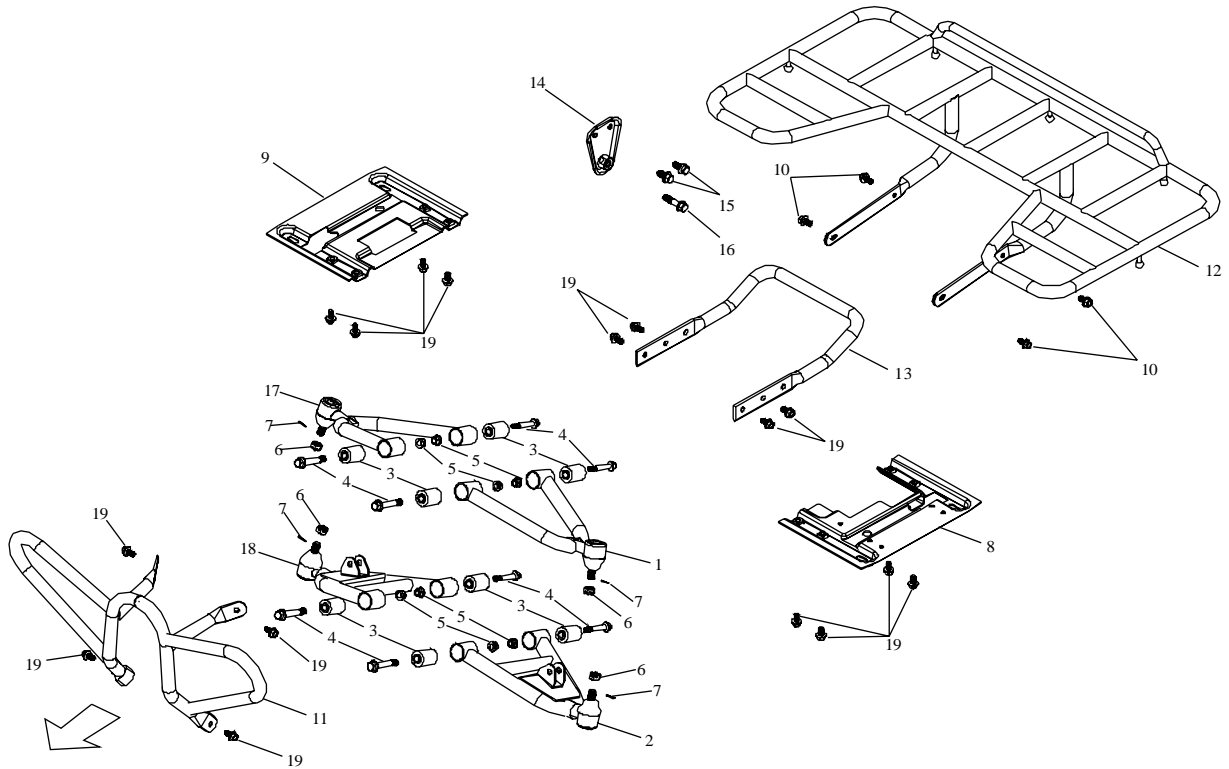


Fig 18. Arm Assy , Footrest A

NO	PART NUMBER	DESCRIPTION	USING	SPECIFICATION
1	FG00-CX150-000	Rocker Arm Up L.	1	
2	FG01-CX150-001	Rocker Arm Down L.	1	
3	D25-102840	Bush	8	10.2*28*36*40
4	C32-10060	Bolt Flange	8	M10*60*14
5	D33-10	Insert Lock Nut	8	M10
6	C45-12	Nut,Insert Lock	4	M12*P1.5*t10
7	D46-2832	Pin,Cotter	4	2.8*32
8	FJ01-CX150-000	L.Footrest Assy	1	
9	FJ00-CX150-000	R.Footrest Assy	1	
10	K32-08016	Bolt Flange	4	
11	FI00-CX150-000	Front Fend Bur Assy	1	
12	FC13-CX150-000	Rear Carrier	1	Option
13	FC20-CX150-000	Rear Fend Bur Assy	1	
14	FC21-CX150-000	Exhaust Pipe,Fixed Plate	1	
15	D32-10020	Bolt Flange	2	
16	K32-10040	Bolt Flange	1	
17	FH00-CX150-000	Rocker Arm Up R.	1	
18	FH01-CX150-001	Rocker Arm Down R.	1	
19	K32-08012	Bolt Flange	16	M8*12

Unilli KX150 Parts List

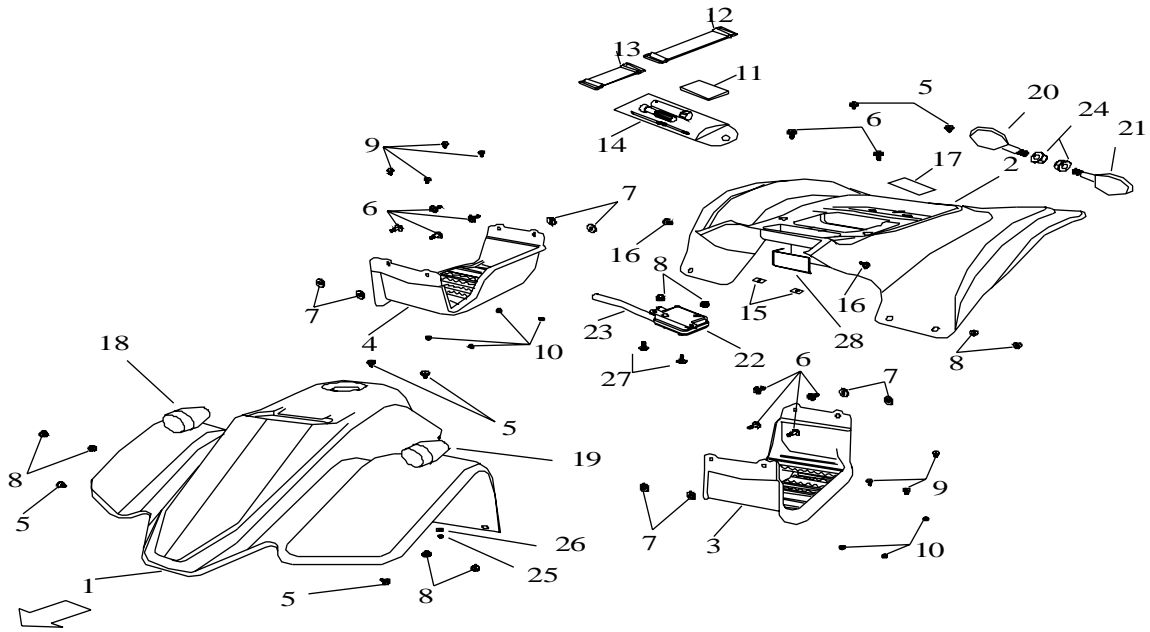


Fig 19. Fender				
NO	PART NUMBER	DESCRIPTION	USING	SPECIFICATION
1	FL01-CX150-000	Front Fender-red	1	
	FL01-CX150-00B	Front Fender-yellow	1	
	FL01-CX150-00C	Front Fender-blue	1	
2	FL02-CX150-000	Rear Fender-red	1	
	FL02-CX150-00B	Rear Fender-yellow	1	
	FL02-CX150-00C	Rear Fender-blue	1	
3	FL23-CX150-000	Left Plastic	1	
4	FL24-CX150-000	Right Plastic	1	
5	D43-06016	Screw,Hex	6	
6	D55-06018	Bolt ,Stair	10	M6×18
7	FK05-CX050-000	Rubber Mate	10	150*100*25.4
8	C04-06	Nut, Flange	7	
9	G40-06012	Screw Hex	7	
10	K33-06	Insert Lock Nut	8	
11	FK05-CX150-000	Pad	1	
12	FL05-CX050-000	Rubber Band (Battery)	1	
13	FL05-CX050-00A	Rubber Band (Tool Box)	1	
14	FZ10-CX150-000	Tool	1	
15	K42-04	Nut. U Plate	2	
16	G12-04016	Screw, Tapping	2	M4*16
17	FQ06-CX150-000	Sticker	1	
18	FZ28-AW050-00A	R, Direation Light Front	1	
19	FZ27-AW050-00A	L, Direation Light Rear Front	1	
20	FZ26-CX150-000	R, Direation Light Rear	1	
21	FZ25-CX150-000	L, Direation Light Rear	1	
22	AJ07-CX150-000	Air Duct Valve	1	
23	D19-1217400	ACM Air Conduit	1	
24	G04-10	Hexagonal Flat Flange Nut	2	M10
25	D06-05	Nut, Hex	2	M5
26	D11-061310	Washer, Plate	2	6.5×13×1
27	G32-06016	Bolt Flange	2	M6x16L
28	FL21-AX050-000	Heatproof Gasket	1	1/100

Unilli KX150 Parts List

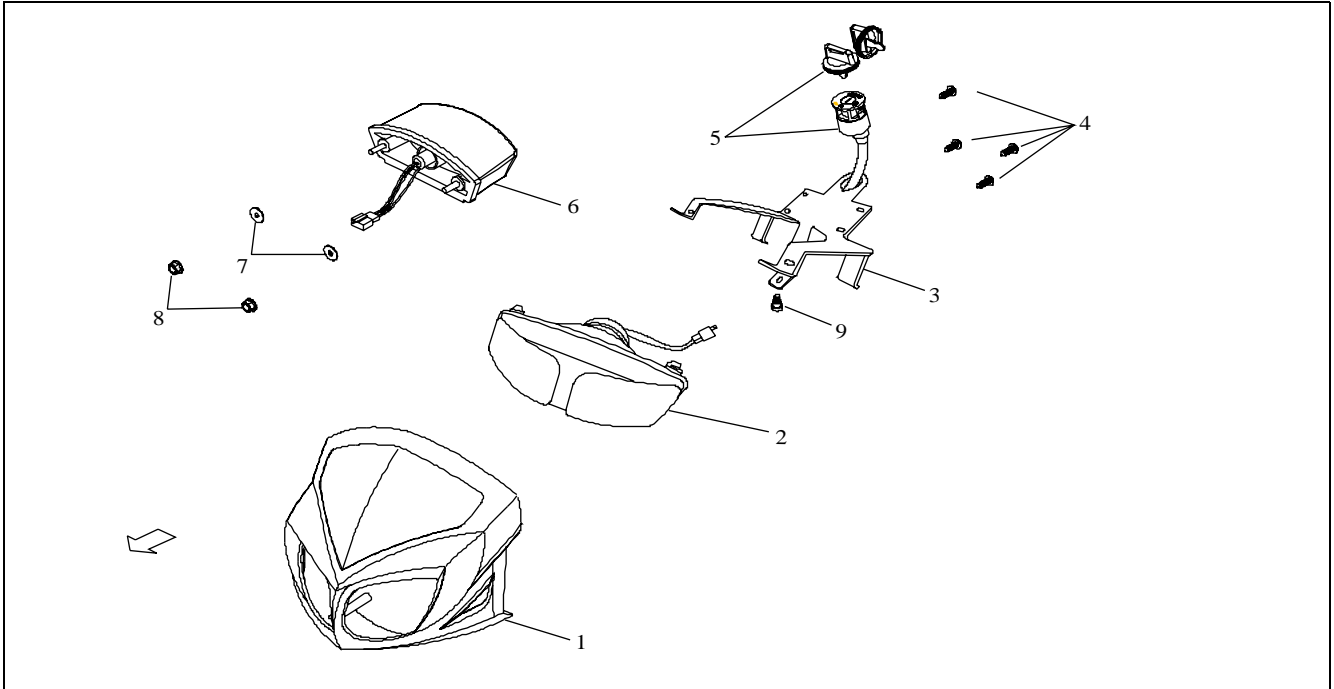


Fig 20. Head Light , Tail Light				
NO	PART NUMBER	DESCRIPTION	USING	SPECIFICATION
1	FM01-CX150-0A0	Cover, Headlight-red	1	
	FM01-CX150-0A1	Cover, Headlight-blue	1	
	FM01-CX150-0A2	Cover, Headlight-yellow	1	
2	FN00-CX150-00A	Head Light Ass'y	1	
3	FN20-CX150-00A	Headlight Fixed	1	
4	G12-04016	Screw, Tapping	4	M4*16
5	FX36-CX150-00A	Main Switch	1	
6	FP00-CX150-00A	Tail-Light	1	
7	G11-061910	Washer, Plate	2	6×19×1
8	C04-06	Nut, Flange	2	M6
9	C55-05006	Bolt ,Stair	1	M5*6

Unilli KX150 Parts List

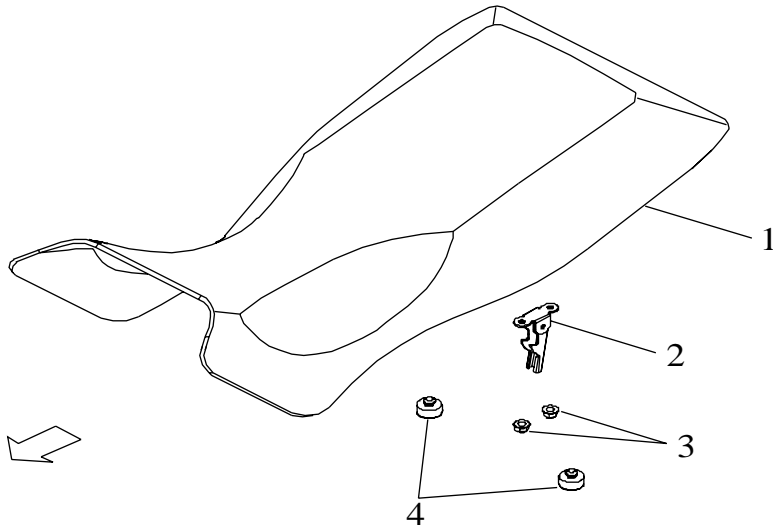


Fig 21. Seat Assy

NO	PART NUMBER	DESCRIPTION	USING	SPECIFICATION
1	FQ00-CX150-000	Seat Ass'y	1	
2	FQ01-CX050-000	Hook, Seat Fixed	1	
3	C04-06	Nut, Flange	2	M6
4	FQ02-CX150-000	Rubber, Seat	2	

Unilli KX150 Parts List

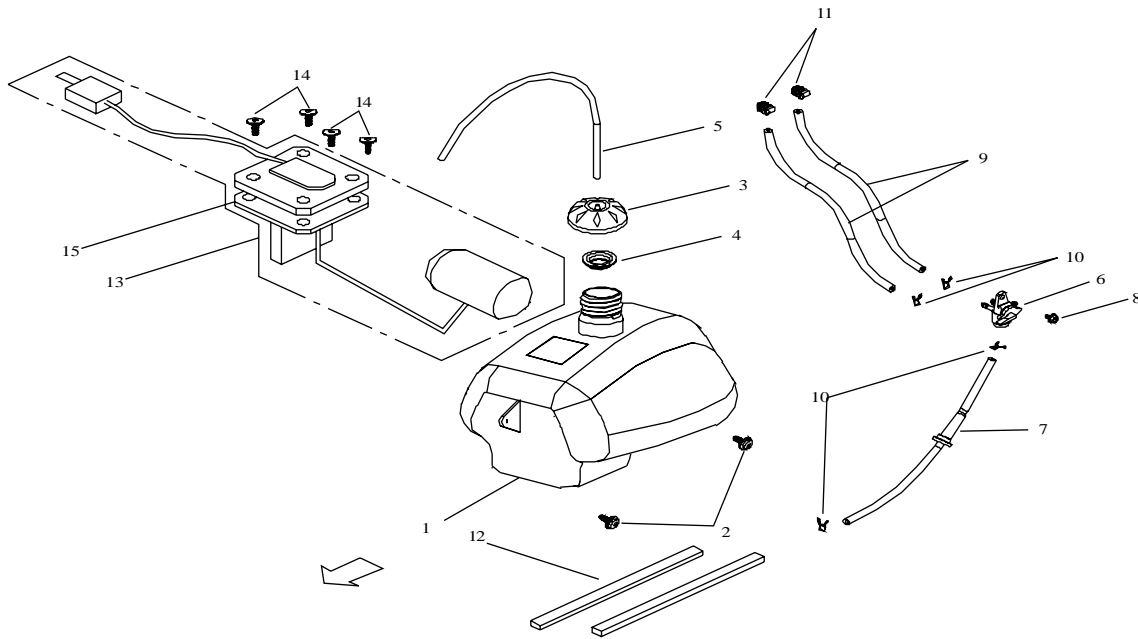


Fig 22. Fuel Tank

NO	PART NUMBER	DESCRIPTION	USING	SPECIFICATION
1	FR02-CX150-00C	Tank, Fuel	1	
2	K28-06016	Screw,Hex	2	M6*16
3	FR10-CX050-000	Cap, Fuel Tank	1	
4	FR07-CX050-000	Protective, Fuel Tank Cover	1	
5	D17-4585380	Breathe Tube	1	4.5*Ø8.5*380
6	FR03-CX050-000	Cup Ass'y, Fuel	1	
7	FR04-CX150-000	Filter Ass'y, Fuel	1	
8	K32-06012	Bolt, Hex. Washer Plate	1	
9	D17-4810280A	Tube, Oil	2	Ø4.8*Ø10*280
10	D18-0808	Clip, Tube	4	
11	D10-1208	Clip, Tube	2	
12	FR06-CX050-000	Pad, Fuel Tank	2	L=200mm
13	FR11-CX150-000	Gauge, Fuel Level	1	
14	K52-05012	Screw, Pan Head With Washer	4	
15	FR12-CX150-000	Cauge Fuel Level Rubber Mate Float	1	

Unilli KX150 Parts List

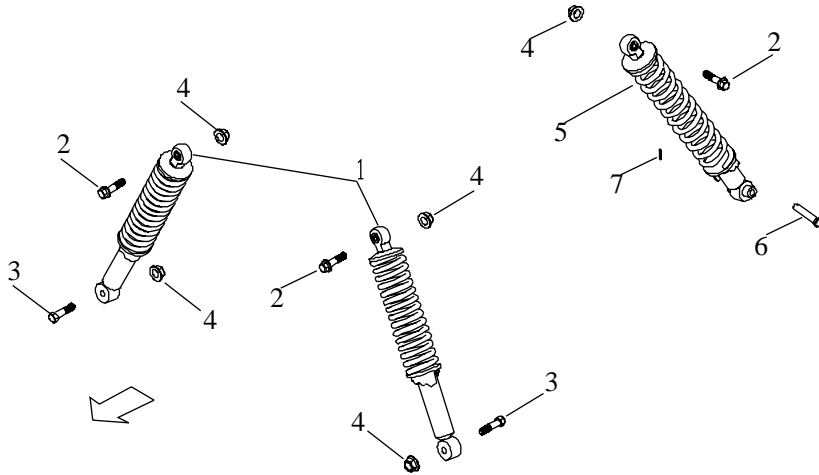


Fig 23. Suspension

NO	PART NUMBER	DESCRIPTION	USING	SPECIFICATION
1	FS01-CX150-001	Shock Absorber, Front	2	337mm*60mm
2	K32-10040	Bolt ,Flange	3	M10*41
3	K44-10040	Bolt ,Flange	2	M10*41
4	D33-10	Nut, Insert Lock	5	M10
5	FS02-CX150-002	Shock Absorber, Rear	1	300mm*65mm
6	K66-12070	Bolt, Pin	1	Ø12*70
7	D46-2332	Pin, Cotter	1	2.3*32

Unilli KX150 Parts List

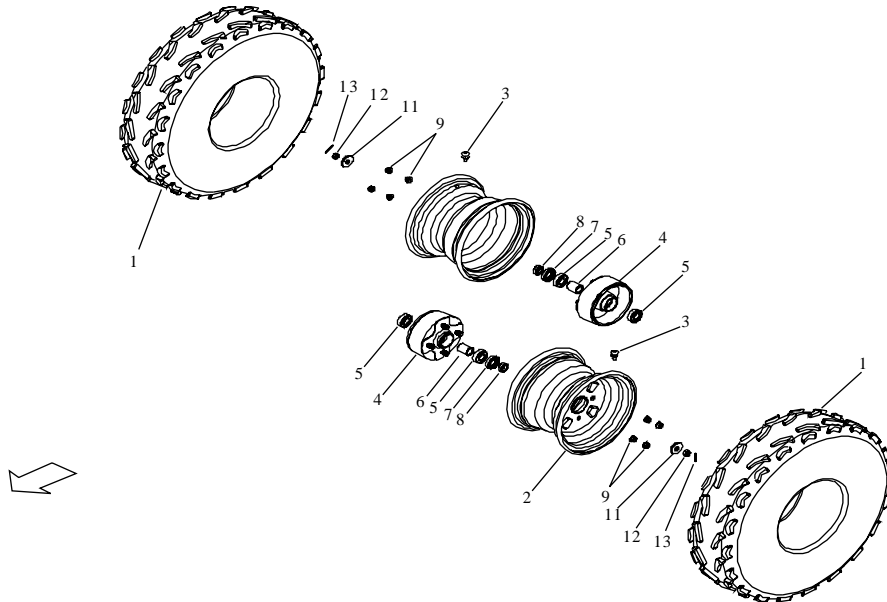


Fig 24. Front Wheel

NO	PART NUMBER	DESCRIPTION	USING	SPECIFICATION
1	FT03-CX150-00A	Tyre	2	HF247 21*7-10
2	FT05-CX150-000	Rim	2	10*5.5
3	FT07-CX050-000	Valve, Rim	2	TR-412
4	FT08-CX150-000	Brake Drum, Front	2	
5	K21-6003VV	Bearing	4	17*35*10
6	D22-172328	Spacer, Inner	2	Ø17*Ø23*28
7	D16-22357	Oil-Seal	2	Ø22*Ø35*7
8	D22-172308	Spacer, Inner	2	Ø17*Ø23*8
9	D33-10	Nut, Insert Lock	8	M10
11	C11-154045	Washer, Plate	2	15×40×14.5
12	C45-14R10.8	Nut, Insert Lock	2	M14*10.8t
13	D46-2832	Pin, Cotter	2	2.8×32

Unilli KX150 Parts List

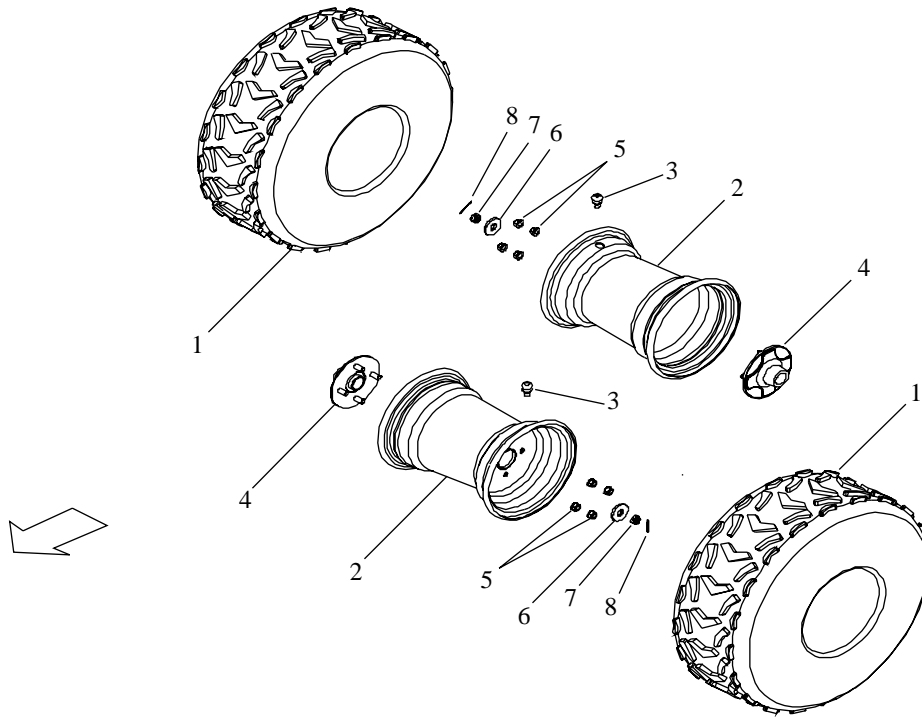


Fig 25. Rear Wheel

NO	PART NUMBER	DESCRIPTION	USING	SPECIFICATION
1	FT04-CX150-00A	Tyre	2	21*10-8 HF247
	FT04-FK090-000	Tyre	2	HF-243 21*12-8
2	FT06-CX150-000	Rim	2	8*8
3	FT07-CX050-000	Valve, Rim	2	TR-412
4	FW14-FK090-000	Shaft Connector, Rear	2	PCD85
5	D33-10	Nut, Insert Lock	8	M10
6	C11-154045	Washer, Plate	2	15×40×4.5
7	C45-R10.8	Nut, Insert Lock	2	M14*P1.5*t10.8
8	D46-2832	Pin, Cotter	2	2.8×32

Unilli KX150 Parts List

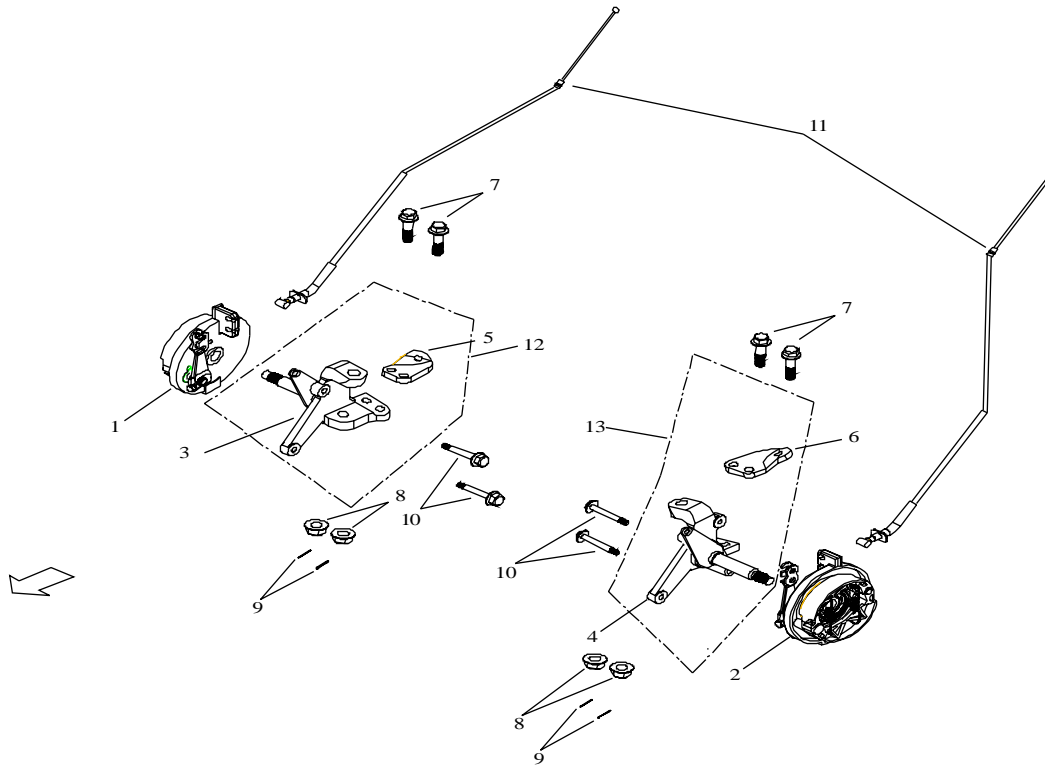


Fig 26. Front Brake

NO	PART NUMBER	DESCRIPTION	USING	SPECIFICATION
1	FU27-CX150-00A	Panel Comp., Front L. Brake	1	
2	FU28-CX150-00A	Panel Comp., Front R. Brake	1	
3	FX59-CX150-000	Tie-Rod, Steering Fixxed Tlate	1	
4	FX60-CX150-000	Tie-Rod, Steering Fixxed Tlate	1	
5	FX13-CX150-000-01	Left Tie-Rod Fixed Plate	1	
6	FX14-CX150-000-02	Right Tie-Rod Fixed Plate	1	
7	D32-10032	Bolt ,Flange	4	M10*32
8	D33-10	Bolt ,Flange	4	M10
9	D46-2320	Pin, Cotter	4	2.3*20
10	C03-08020	Bolt, Hex.Stair	4	M8*20
11	FU14-CX150-000	Cable, Front Brake	2	
12	FX13-CX150-000	Knuckle, L.	1	
13	FX14-CX150-000	Knuckle, R.	1	

Unilli KX150 Parts List

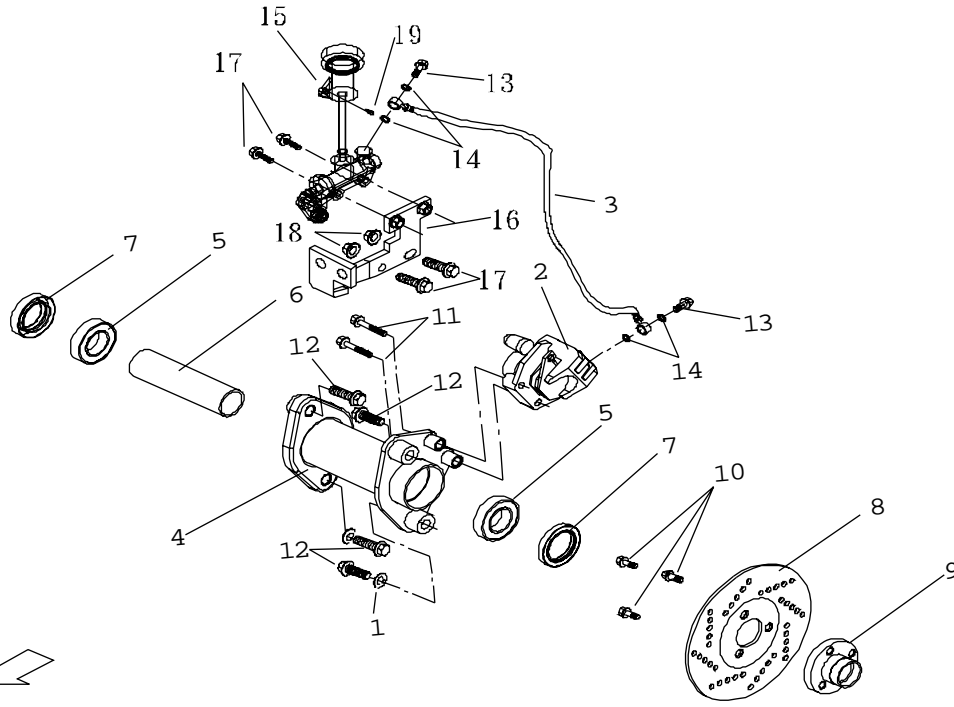


Fig 27. Rear Brake

NO	PART NUMBER	DESCRIPTION	USING	SPECIFICATION
1	K11-132550		2	Ø13×Ø25×5
2	GA01-EX050-000	Break Pincers	1	
3	GA07-EX100-000	Break Oil Tube	1	250L
4	FW15-CX150-000	Fix Seat, Rear Axle	1	
5	K21-6007VV	Bearing	2	Ø35×Ø62×14
6	D22-3542134	Spacer, Tube	1	35.5×42×134
7	D16-426207	Oil Clip	2	Ø42×Ø62×7
8	GA05-CX150-000	Rear Disk Plate	1	DB053
9	GA06-CX150-000	Rear Disk Fix Seat	1	PCDØ80*37T
10	K56-10015	Bole, Hex	3	M10×15×12
11	K41-08040	Bole, Hex. Washer Plate	2	M8×40×15
12	K32-12028	Bole, Hex. Washer Plate	4	M12×28
13	G59-10021	Screw	2	M10×21
14	D30-101515	Co-Washer, Plate	4	Ø10*Ø15*1.5
15	GA03-EX100-000	Brake Pump	1	
16	FU17-EX100-000	Brake Pump Fix Seat	1	
17	K32-08020	Bolt, Hex. Washer Plate	4	M8×20
18	C04-08	Hex Saw Nut	2	M8
19	K52-05012	Screw, Pan Head	1	M5*12

Unilli KX150 Parts List

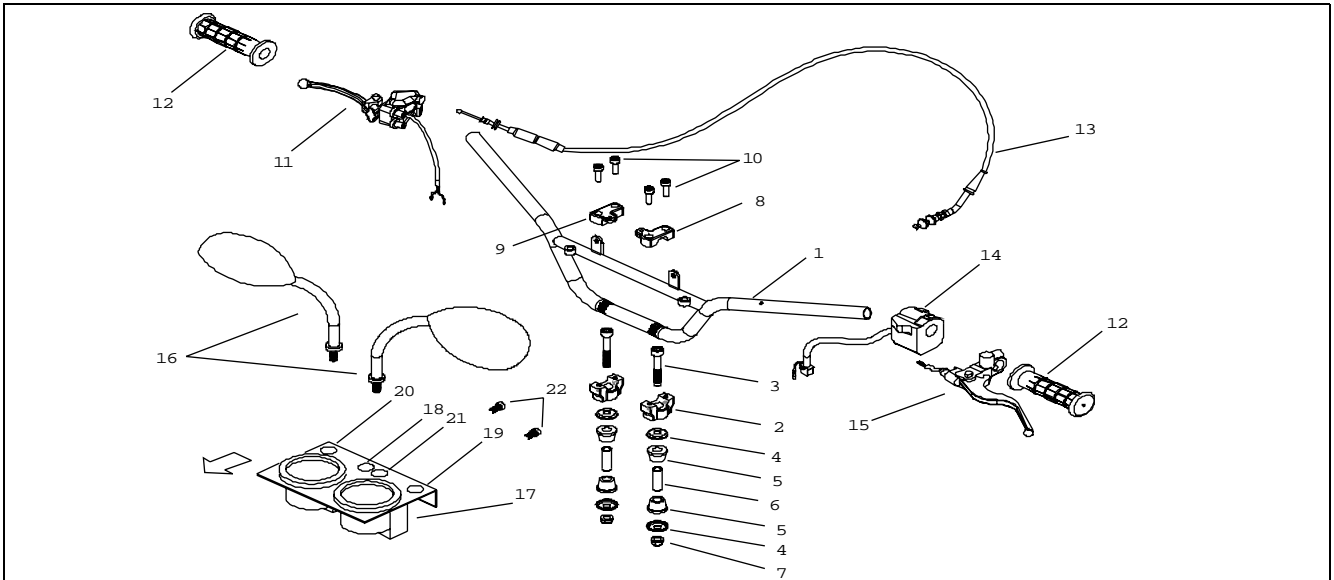


Fig 28. Handle Bar

NO	PART NUMBER	DESCRIPTION	USING	SPECIFICATION
1	FX01-CX150-00F	Handle Bar Ass'y	1	
2	FX06-CX150-000	Clamp Saddle, Handlebar	2	
3	K03-10070	Screw, Hex. Socker	2	M10*70
4	D60-103010	Plated Washer	4	Ø10*Ø30*1.0
5	FX53-CX150-000	Precaution Rubber	4	70
6	D22-1014044	Bush	2	Ø10.2*Ø14*44
7	D33-10	Nut, Insert Lock	2	M10
8	FX07-CX050-000	Clamp Cap, Handlebar L.	1	
9	FX08-CX050-000	Clamp Cap, Handlebar R.	1	
10	K32-06035	Screw, Hex. Socker	4	M6*35
11	FX02-CX150-000	Level Ass'y, R.	1	
12	FX11-CX150-000	Crip, Handlebar	2	51A8-FL
13	FU08-CX150-000	Cable, Throttle	1	
14	FX21-CX150-00A	Switch Ass'y, L.	1	
15	FX03-CX150-000	Level Ass'y, L.	1	
16	FX19-CX050-00A	Rear Mirror (R.L)	1	
17	FZ32-BX050-001	Speed Meter Assy	1	
18	FX28-CX050-00A	Lamp, Far	1	
19	FY29-CX050-00L	Lamp, Direction (L)	1	
20	FY29-CX050-00R	Lamp, Direction (R)	1	
21	FX58-CX050-000	Lamp, (N)	1	
22	D03-06012	Screw, Hex. Socker	2	

Unilli KX150 Parts List

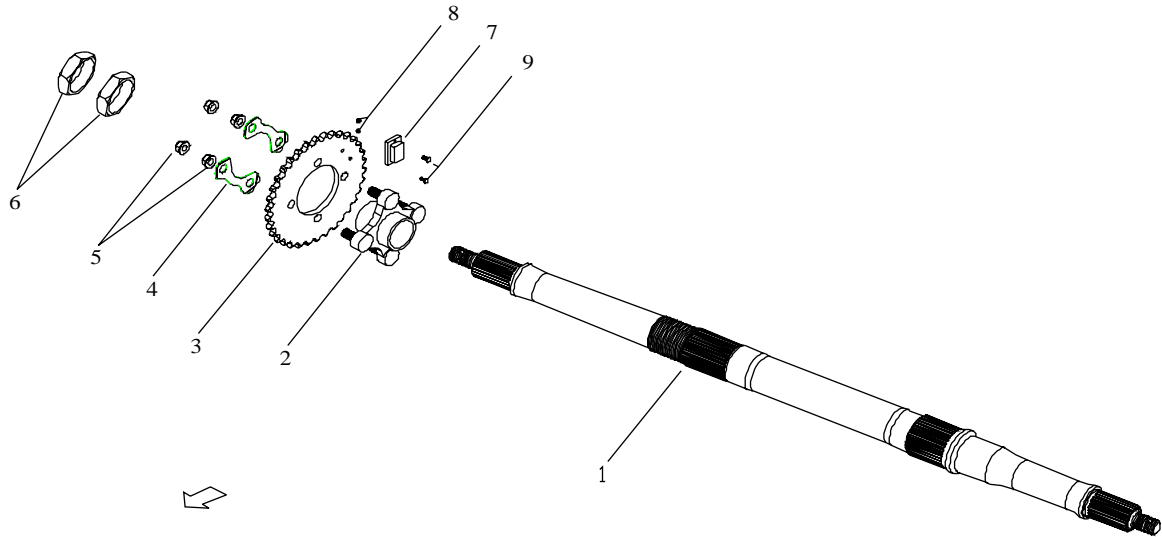


Fig 29. Rear Wheel Axle				
NO	PART NUMBER	DESCRIPTION	USING	SPECIFICATION
1	FY01-CX150-000	Wheel Axle, Rear	1	
2	FY05-CX150-000	Sprocket Holder, Driven	1	
3	FY12-CX150-00A	Sprocket, Drive	1	#520*32T
4	FY13-CX150-000	Rear Sprocket Spacer	2	
5	D06-10	Nut, Hex.	4	M10
6	G06-33	Nut, Hex.	2	M33
7	FZ32-BX050-001-01	Speed Meter Magneto	1	
8	K02-04012	Cross Round Head Bolt	2	M4×12
9	D06-04	Nut, Hex.	2	M4

Unilli KX150 Parts List

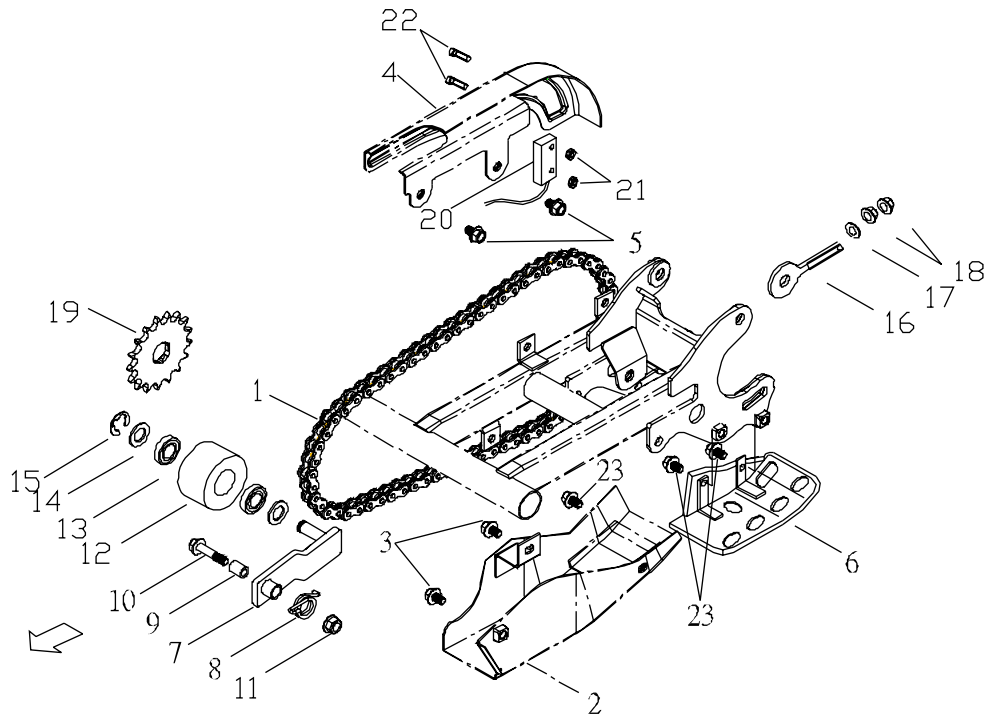


Fig 30.

Chain

NO	PART NUMBER	DESCRIPTION	USING	SPECIFICATION
1	FY06-CX520-076	Chain	1	#520*76(0.96)
2	FY08-CX100-000	Protect Cover, Chain (Down)	1	
3	K32-08012	Bolt, Hex. Washer Flate	2	M8×12
4	FY10-CX150-000	Front Sprocket	1	
5	K32-08010	Bolt, Hex. Washer Flate	2	M8×10
6	FW08-CX050-000	Protective, Rear brake Cover	1	
7	FY15-CX150-000	Chain Turnor Ass'y	1	
8	FY16-CX150-001	Chain Turner Spring	1	
9	D22-0812026	Chain Turner Bearing	1	Ø8*Ø12*26
10	K32-08045	Bolt ,Flange	1	M8×45
11	D33-08	Insert Lock Nut	1	M8
12	FY11-CX150-000	Chain Rolller	1	
13	K21-6901VV	Bearing	2	6901VV
14	D11-121810	Gasket	2	
15	D01-E12	E Clip	1	E12
16	FY07-CX150-001	Adjuster, Chain	2	
17	G11-081620	Washer, Plate	2	
18	D06-08	Nut	4	M8
19	AQ04-CX150-000	Front Sprocket	1	#520-17T
	AQ04-CX150-00A	Front Sprocket	1	#520-16T
20	FZ32-BX050-001-02	Sensor Speed Metor Magneto Fixed Plate	1	
21	C06-M3	Nut, Hex.	2	M3
22	C02-03012	Cross Round Head Bolt	2	M3x12
23	K32-08020	Bolt, Hex. Washer Flate	3	M8*20

Unilli KX150 Parts List

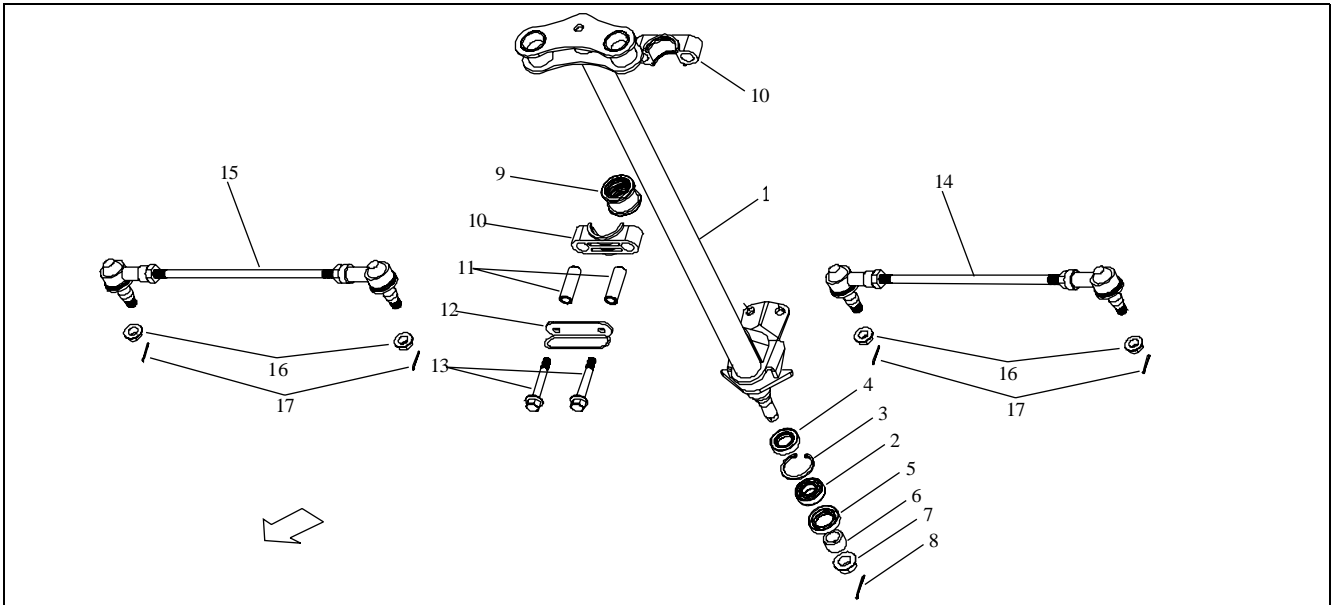


Fig 31. Steering				
NO	PART NUMBER	DESCRIPTION	USING	SPECIFICATION
1	FX12-CX150-000	Shaft Ass'y, Steering	1	
2	K21-6002VV	Bearing	1	15*32*9
3	D09-R32	Circlip	1	RTW-32
4	D16-18327	Oil-Seal	1	Ø18*Ø32*7
5	D16-22357	Oil-Seal	1	Ø22*Ø35*7
6	D22-152115	Spaccer, Inner	1	Ø15*Ø21*15
7	C33-14	Nut, Insert Lock	1	M14*t11
8	D46-2832	Pin, Cotter	1	2.8*32
9	FX18-CX150-000	PU Sleeve, Steering Shaft	1	
10	FX17-CX150-000	Holder, Steering Shaft	2	
11	D22-0814043	Spaccer, Steering Shaft	2	Ø8.2*Ø14*43
12	FX54-CX150-000	Knuckle Fixed Ring	1	
13	D32-08060	Bolt,Hex Washer Face	2	M8*60*□15L
14	FX15-CX150-000	Tie-Rod. Steering , L	1	290mm
15	FX16-CX150-000	Tie-Rod. Steering , R	1	290mm
16	D33-10	Nut, Insert Lock	4	M10
17	D46-2332	Pin, Cotter	4	2.3*32

Unilli KX150 Parts List

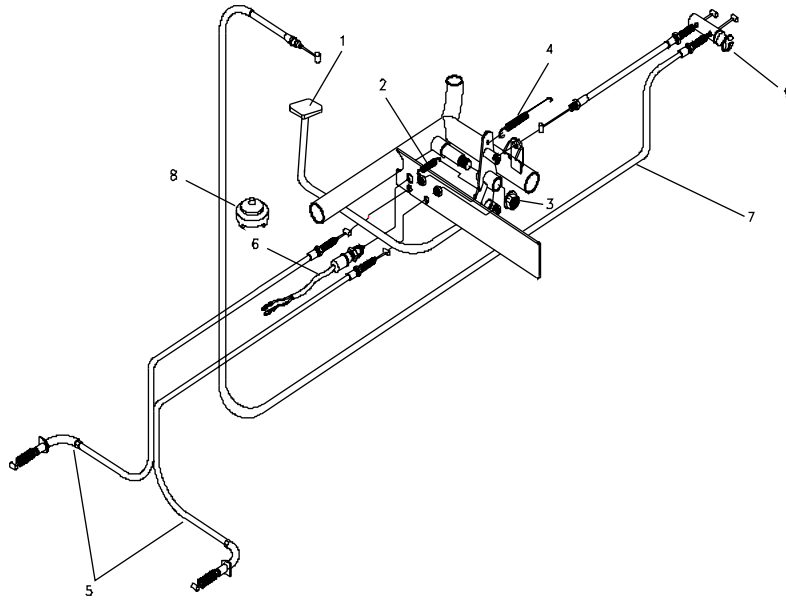


Fig.32 Foot Brake				
No	PART NUMBER	DESCRIPTION	USING	SPECIFICATION
1	FU12-CX150-000	Foot Brake Kick Shaft	1	
2	C48-1007044	Return Spring, Front Brake	1	1.0x7.0x44.5
3	D33-12	U-Nut	1	M12
4	FW19-CX100-000	Return Spring	1	
5	FU22-CX150-000	Front Brake Cable	2	
6	FX46-CX100-000	Foot Brake Sensor , Cable	1	
7	FU31-CX150-000	Foot Brake Cable(F)	1	
8	FB23-CX100-000	Rubber Buffer	1	
9	D01-E08	E Clip	1	E08